

RNAV (GPS) RWY 1

APCH CRS	Rwy Idg	12,400
010°	TDZE	837
	Arprt Elev	871

AL-496 (USAF)

WHITEMAN AFB (KSZL)

⚠ * When ALS inop, increase CAT AB RVR to 55 and vis to 1 mile, CAT CDE vis to 1 3/8 miles.
** Circling not authorized W of Rwy 1-19.

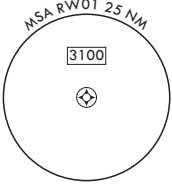
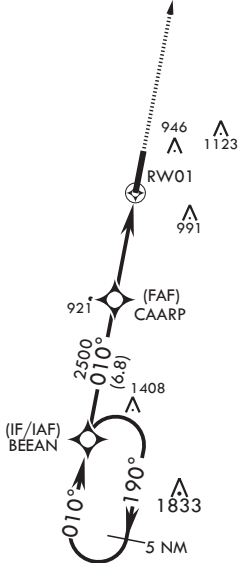
ALSF-1



MISSED APPROACH: Climb to 3000 direct SKIDD and hold.

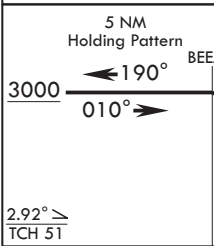
ATIS★	APP CON★	TOWER★	GND CON★	CLNC DEL★	ASR
118.725 239.025	127.45 284.0	132.4 318.8	119.125 275.8	121.75 335.8	

DME/DME RNP 0.3 N/A



EMERG SAFE ALT 100 NM 4700

5 NM Holding Pattern



3000

190°

010°

BEEAN

CAARP

2500

1.3 NM to RWY01

5.2 NM

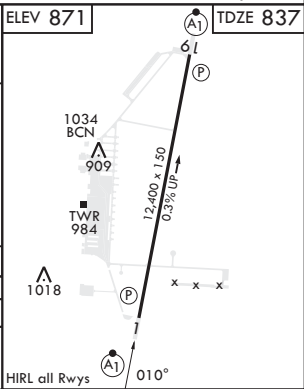
RWY01

3000

SKIDD

ELEV 871

TDZE 837



1034 BCN

909

TWR 984

1018

12,400 x 150

0.3% UP

010°

CATEGORY	A	B	C	D	E
LNAV MDA*	1280/24 443 (500-½)		1280/45 443 (500-¾)		
CIRCLING**	1300-1 429 (500-1)	1340-1 469 (500-1)	1340-1½ 469 (500-1½)	1460-2 589 (600-2)	

RNAV (GPS) RWY 1

NC-3, 10 JUL 2025 to 07 AUG 2025

NC-3, 10 JUL 2025 to 07 AUG 2025