

NOB NOSTER, MISSOURI

ILS or LOC Y RWY 1

LOC I-SZL <b><u>110.3</u></b>	APCH CRS <b>010°</b>	Rwy Idg <b>12,400</b> TDZE <b>837</b> Arpt Elev <b>871</b>
----------------------------------	-------------------------	--

AL-496 (USAF)

WHITEMAN AFB (KSZL)

RADAR or DME required

**T** \* When ALS inop, increase CAT ABCDE RVR to 40, vis to 3/4 mile.  
 \*\* When ALS inop, increase CAT AB RVR to 55, vis to 1 mile; CAT CDE vis to 1 1/4 miles.

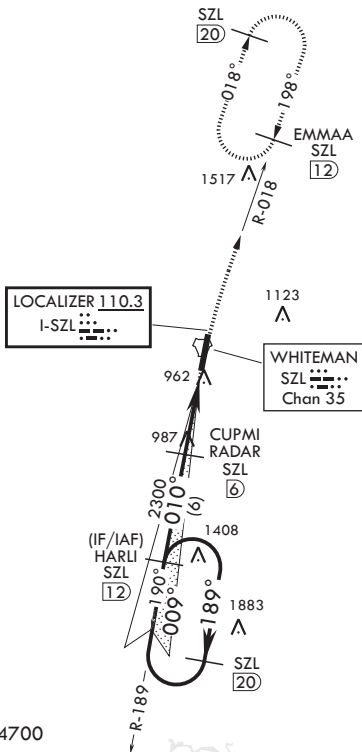
A gel electrophoresis image showing a single band labeled A1.

**MISSED APPROACH:** Climb to 3000  
via SZL TACAN R-018 to EMMAA and  
hold.

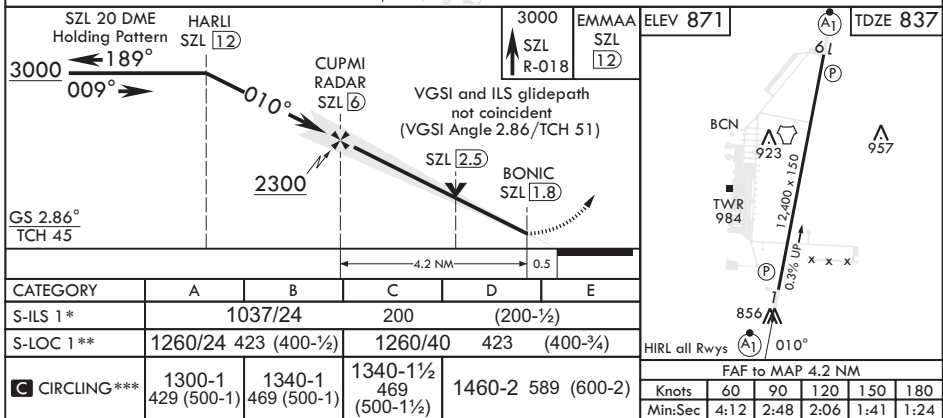
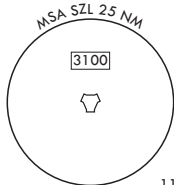
ATIS★ 118.725 239.025	APP CON★ 127.45 284.0	TOWER★ 132.4 318.8	GND CON★ 119.125 275.8	CLNC DEL★ 121.75 335.8	ASR
--------------------------	--------------------------	-----------------------	---------------------------	---------------------------	-----

2046

\*\*\* Circling not authorized  
W of Rwy 1-19.



EMERG SAFE ALT 100 NM 4700



NOB NOSTER, MISSOURI

38°44'N - 93°33'W

WHITEMAN AFB (KSZL)

ILS or LOC Y RWY 1

Amdt 1 10OCT19

NC-3, 10 JUL 2025 to 07 AUG 2025

NC-3, 10 JUL 2025 to 07 AUG 2025