

HI-ILS or LOC Z RWY 19

LOC I-MXJ <b>108.5</b>	APCH CRS <b>190°</b>	Rwy Idg <b>12,400</b> TDZE <b>871</b> Arpt Elev <b>871</b>	AL-496 [USAF]	WHITEMAN AFB (KSZL)
---------------------------	-------------------------	--	---------------	---------------------

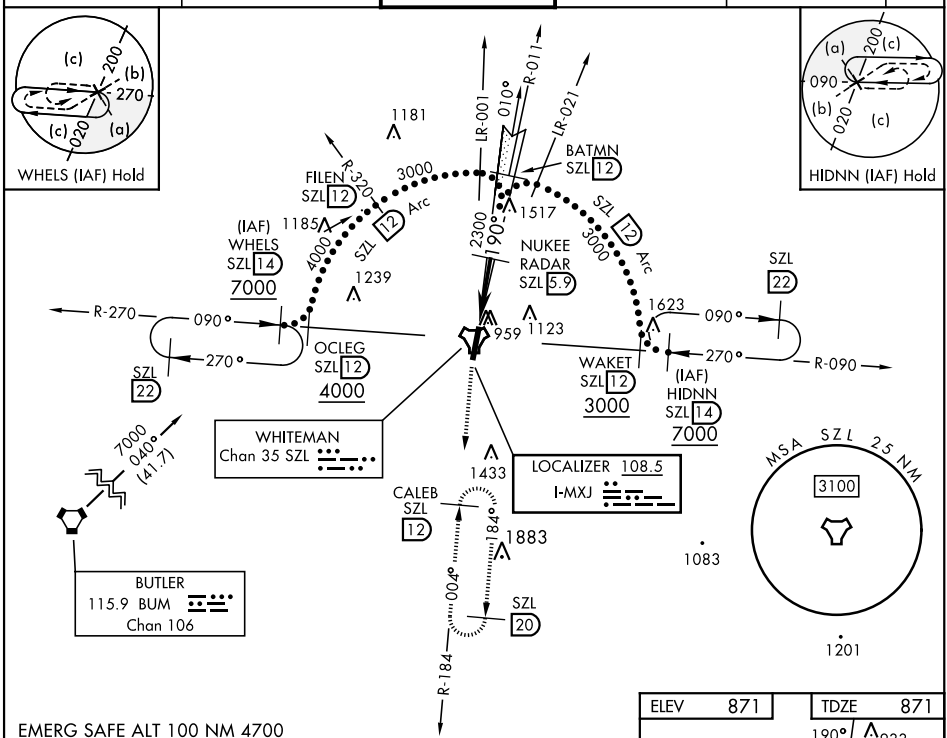
RADAR or DME required.

**T** \*When ALS inop, increase CAT CDE RVR to 40 and vis to  $\frac{3}{4}$  mile.  
 \*\* When ALS inop, increase CAT CDE RVR to 55 and vis to 1 mile.  
 \*\*\* Circling not authorized W of Rwy 1-19.

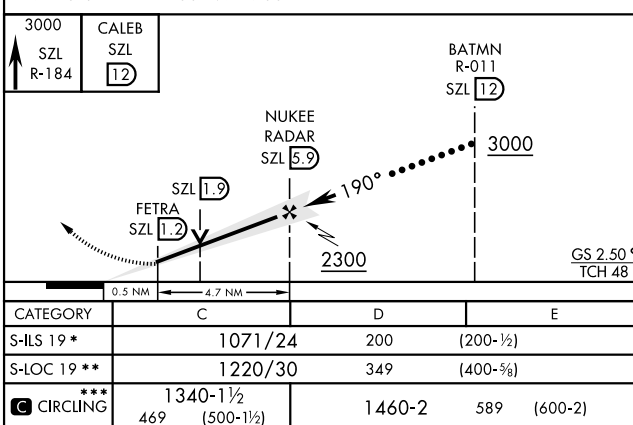
ALSF-1

MISSED APPROACH: Climb to 3000 via SZL TACAN R-184 to CALEB and hold.

ATIS ★ 118.725 239.025	APP CON ★ 127.45 284.0	TOWER ★ 132.4 318.8	GND CON ★ 119.125 275.8	CLNC DEL ★ 121.75 335.8	ASR
---------------------------	---------------------------	------------------------	----------------------------	----------------------------	-----



EMERG SAFE ALT 100 NM 4700



## HI-ILS or LOC Z RWY 19