

LOC I-SZL 110.3	APCH CRS 010°	Rwy Idg 12,400 TDZE 837 Arprt Elev 871	AL-496 [USAF]	WHITEMAN AFB (KSZL)
---------------------------	-------------------------	---	---------------	---------------------

RADAR or DME required.

✶ When ALS inop, increase CAT CDE RVR to 40 and vis to ¾ mile.

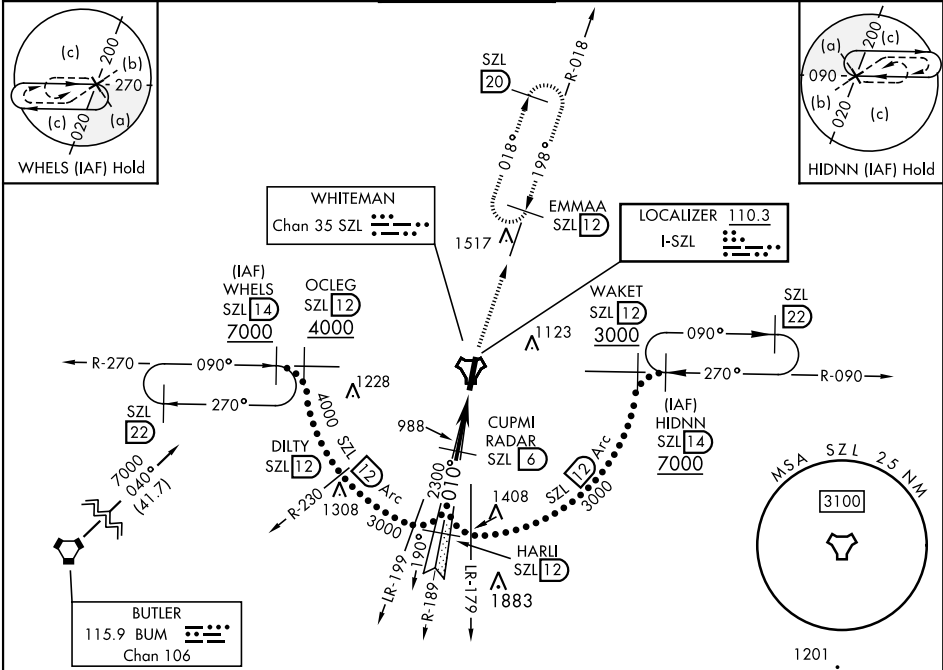
✷ When ALS inop, increase CAT CDE vis to 1¼ miles.

✸✸✸ Circling not authorized W of Rwy 1-19.

ALSF-1

MISSED APPROACH: Climb to 3000 via SZL TACAN R-018 to EMMAA and hold.

ATIS ★ 118.725 239.025	APP CON ★ 127.45 284.0	TOWER ★ 132.4 318.8	GND CON ★ 119.125 275.8	CLNC DEL ★ 121.75 335.8	ASR
----------------------------------	----------------------------------	-------------------------------	-----------------------------------	-----------------------------------	-----



EMERG SAFE ALT 100 NM 4700

HARLI R-189 SZL 12

VGSI and glidepath not coincident (VGSI Angle 2.86/TCH 51).

3000

2300

GS 2.86° TCH 45

CUPMI RADAR SZL 6

BONIC SZL 1.8

4.2 NM

0.5 NM

3000 SZL R-018

EMMAA SZL 12

CATEGORY	C	D	E
S-ILS 1*	1037/24	200	(200-½)
S-LOC 1**	1260/40	423	(400-¾)
✸✸✸ CIRCLING	1340-1½ 469 (500-1½)	1460-2	589 (600-2)

HIRL Rwy 1-19

FAF to MAP 4.2 NM

Knots	120	140	160	180	200
Min:Sec	2:06	1:48	1:35	1:24	1:16

KNOB NOSTER, MISSOURI

38°44'N-93°33'W

WHITEMAN AFB (KSZL)

Amtd 1 10OCT19

HI-ILS or LOC Z RWY 1