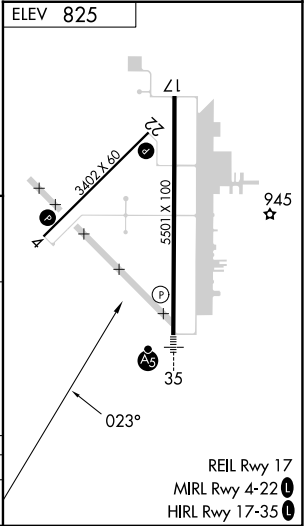
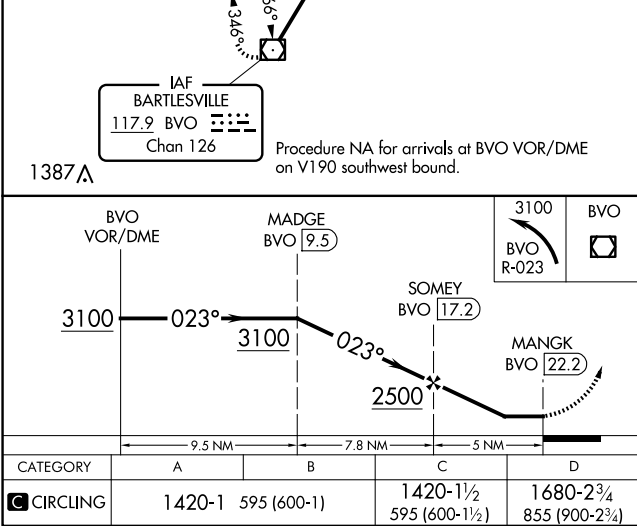
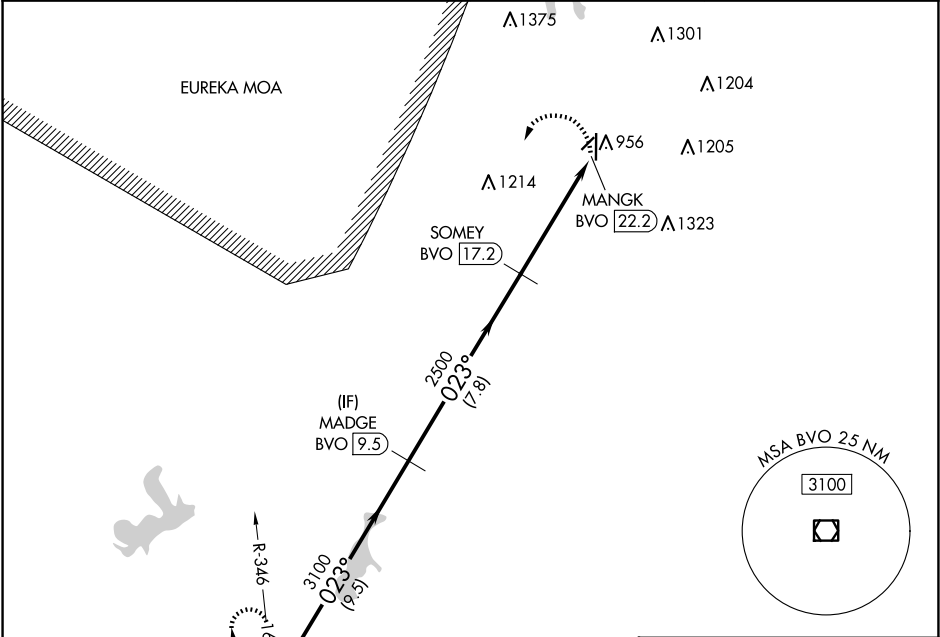


VOR/DME BVO 117.9 Chan 126	APP CRS 023°	Rwy Idg TDZE Apt Elev 825	N/A N/A 825
--	------------------------	---	--

VOR-A
INDEPENDENCE MUNI (IDP)

DME required.		MISSED APPROACH: Climbing left turn to 3100 on BVO VOR/DME R-023 to BVO VOR/DME and hold.	
Circling Rwy 4, 22 NA at night.			
AWOS-3PT 118.525	KANSAS CITY CENTER 128.6 282.325	CLNC DEL 121.65	UNICOM 123.05 (CTAF) 0



NC-2, 10 JUL 2025 to 07 AUG 2025

NC-2, 10 JUL 2025 to 07 AUG 2025