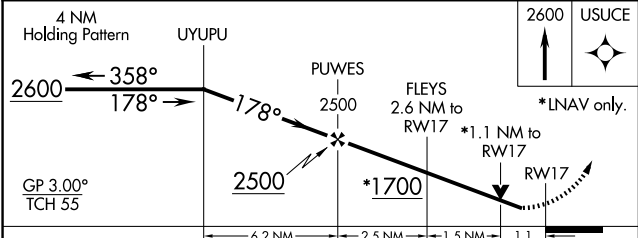
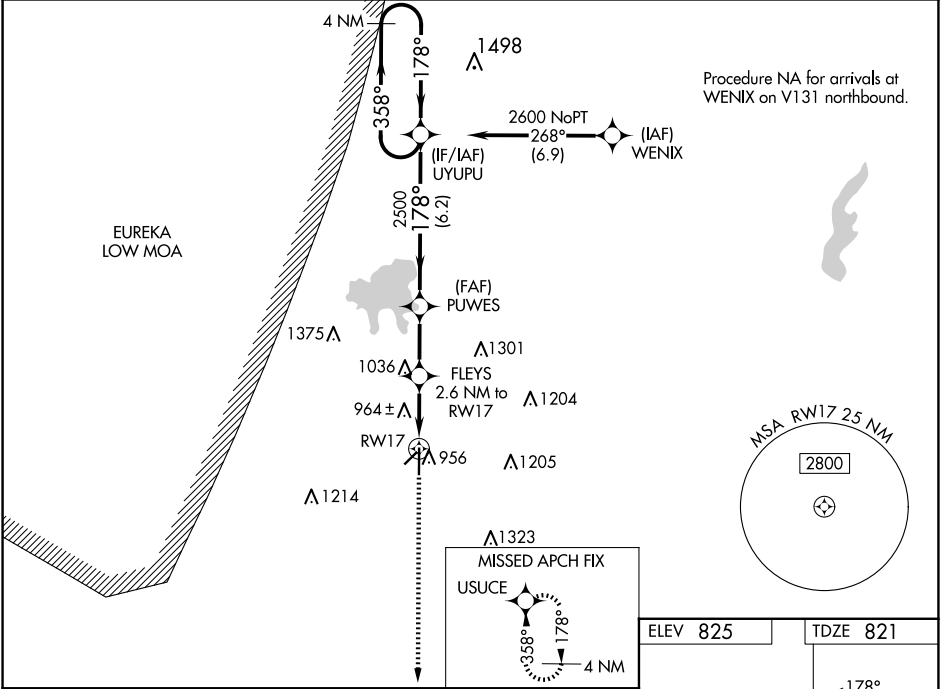


WAAS CH <b>50338</b> <b>W17A</b>	APP CRS <b>178°</b>	Rwy Idg TDZE <b>821</b> Apt Elev <b>825</b>
--	------------------------	---

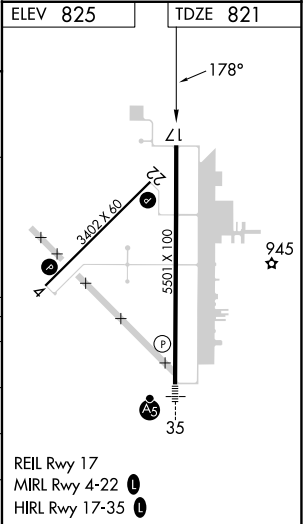
RNAV (GPS) RWY 17

INDEPENDENCE MUNI (IDP)

RNP APCH.			MISSED APPROACH: Climb to 2600 direct USUCE and hold.
<div><div>▼</div><div>▲</div></div>	For uncompensated Baro-VNAV systems, LNAV/VNAV NA below -16°C (4°F) or above 54°C (130°F). Circling Rwy 4, 22 NA at night. Rwy 17 helicopter visibility reduction below ¾ SM NA.		
AWOS-3PT <b>118.525</b>	KANSAS CITY CENTER <b>128.6 282.325</b>	CLNC DEL <b>121.65</b>	UNICOM <b>123.05 (CTAF) 0</b>



CATEGORY	A	B	C	D
LPV DA	1021-¾ 200 (200-¾)			
LNAV/VNAV DA	1076-¾ 255 (300-¾)			
LNAV MDA	1220-1	399 (400-1)	1220-1½	399 (400-1½)
CIRCLING	1280-1	455 (500-1)	1340-1½ 515 (600-1½)	1680-2¾ 855 (900-2¾)



NC-2, 10 JUL 2025 to 07 AUG 2025

NC-2, 10 JUL 2025 to 07 AUG 2025