

LOC/DME I-DP

110.7

Chan 44

APP CRS

358°

Rwy Idg

5501

TDZE

821

Apt Elev

825

ILS or LOC RWY 35

INDEPENDENCE MUNI (IDP)

NA

Circling Rwy 4, 22 NA at night.

MALSR

MISSED APPROACH: Climb to 1500 then climbing right turn to 3000 on heading 179° to intercept BVO VOR/DME R-043 to VOVRY INT and hold.

AWOS-3PT

118.525

KANSAS CITY CENTER

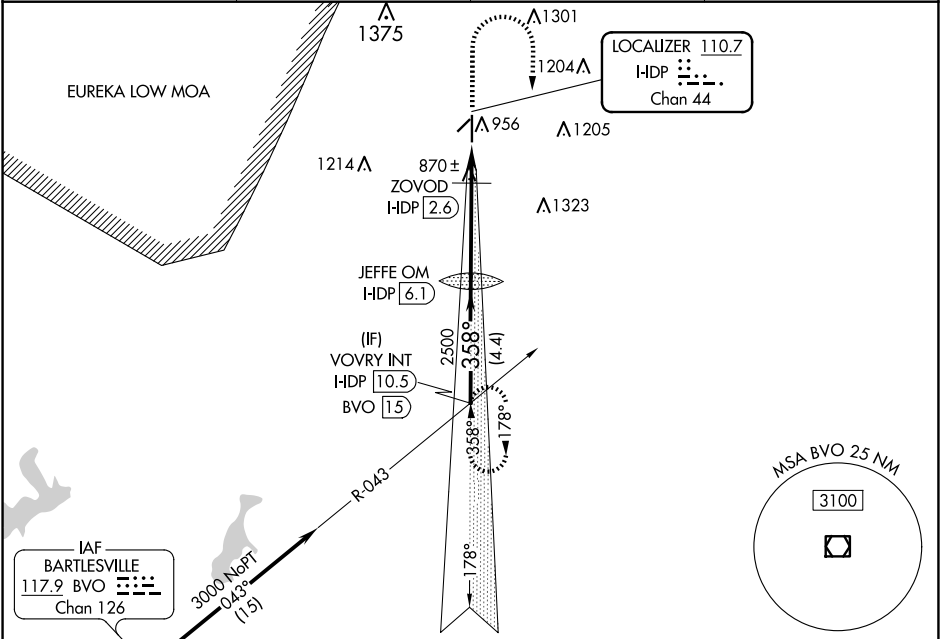
128.6 282.325

CLNC DEL

121.65

UNICOM

123.05 (CTAF) 0



Procedure NA for arrivals at BVO VOR/DME on V190 southwest bound.

VOVRY INT

I-DP 10.5

BVO 15

JEFFE OM

I-DP 6.1

1500

3000

hdg 179°

BVO R-043

VOVRY INT

3000

358°

2500

2461

1340

GS 3.00°

TCH 42

4.4 NM

3.5 NM

0.7 NM

0.8 NM

CATEGORY

A

B

C

D

S-ILS 35

1021-1/2

200 (200-1/2)

S-LOC 35

1340-1/2

519 (600-1/2)

1340-1

519 (600-1)

CIRCLING

1340-1

515 (600-1)

1340-1 1/2

515 (600-1 1/2)

1680-2 3/4

855 (900-2 3/4)

ZOVOD FIX MINIMUMS

S-LOC 35

1120-1/2

299 (300-1/2)

CIRCLING

1280-1

455 (500-1)

1340-1 1/2

515 (600-1 1/2)

1680-2 3/4

855 (900-2 3/4)

ELEV 825

TDZE 821

REIL Rwy 17

MIRL Rwy 4-22 0

HIRL Rwy 17-35 0

FAF to MAP 5 NM

Knots 60 90 120 150 180

Min:Sec 5:00 3:20 2:30 2:00 1:40