

HOMESTEAD, FLORIDA

RNAV (GPS) RWY 6

| | |
|-------------------------|--|
| APCH CRS 055° | Rwy Idg 11,201 TDZE 5 Arpt Elev 6 |
|-------------------------|--|

AL-494 (USAF)

HOMESTEAD ARB (KHST)

T * When ALS inop increase CAT AB RVR to 55, vis to 1 mile,
CAT CDE vis to 1 3/8 miles.
** Circling NA NW of Rwy 6-24.

ALSF-1

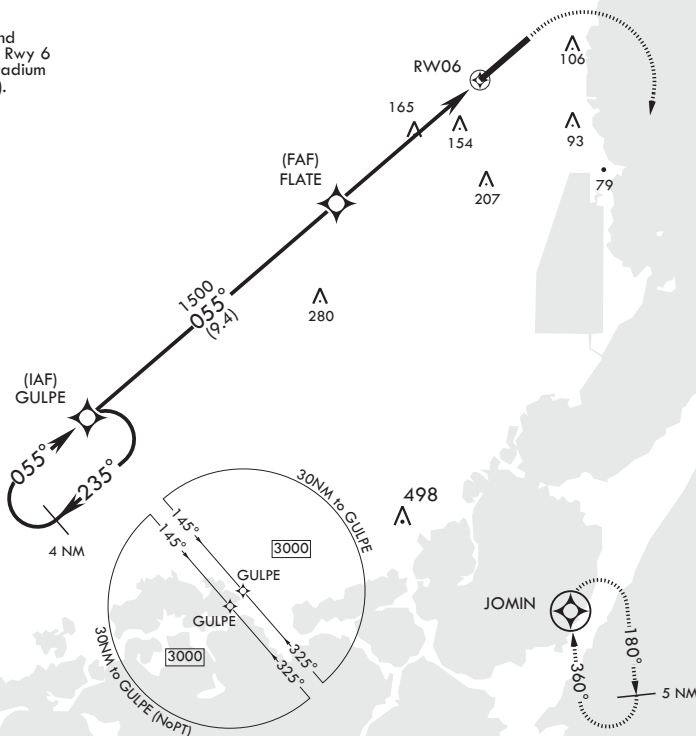
MISSED APPROACH: Climb to 800 then climbing right turn to 3000 direct JOMIN and hold.

| | | | | |
|---------------|-----------------|---------------|--------------|--------------|
| ATIS★ | APP CON/DEP CON | TOWER | GND CON | CLNC DEL |
| 132.275 269.9 | 123.8 257.675 | 133.45 279.55 | 121.75 275.8 | 121.75 275.8 |

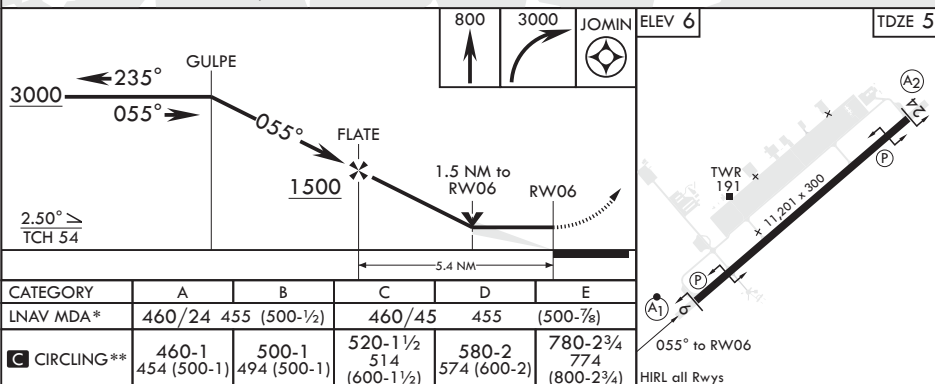
DME/DME RNP -0.3 NA

RNP APCH

CAUTION: Heliport and Stadium 2.2 NM final Rwy 6 at Homestead ARB (stadium may be lit after dark).



EMERG SAFE ALT 100 NM 15,100



HOMESTEAD, FLORIDA

25°29'N - 80°23'W

HOMESTEAD ARB (KHST)

Amdt 1 13AUG20

RNAV (GPS) RWY 6

SE-3, 10 JUL 2025 to 07 AUG 2025

SE-3, 10 JUL 2025 to 07 AUG 2025