

VORTAC RSK <b>115.3</b> Chan <b>100</b>	APP CRS <b>070°</b>	Rwy Ldg TDZE Apt Elev <b>5590</b> <b>5498</b> <b>5507</b>
---	------------------------	--

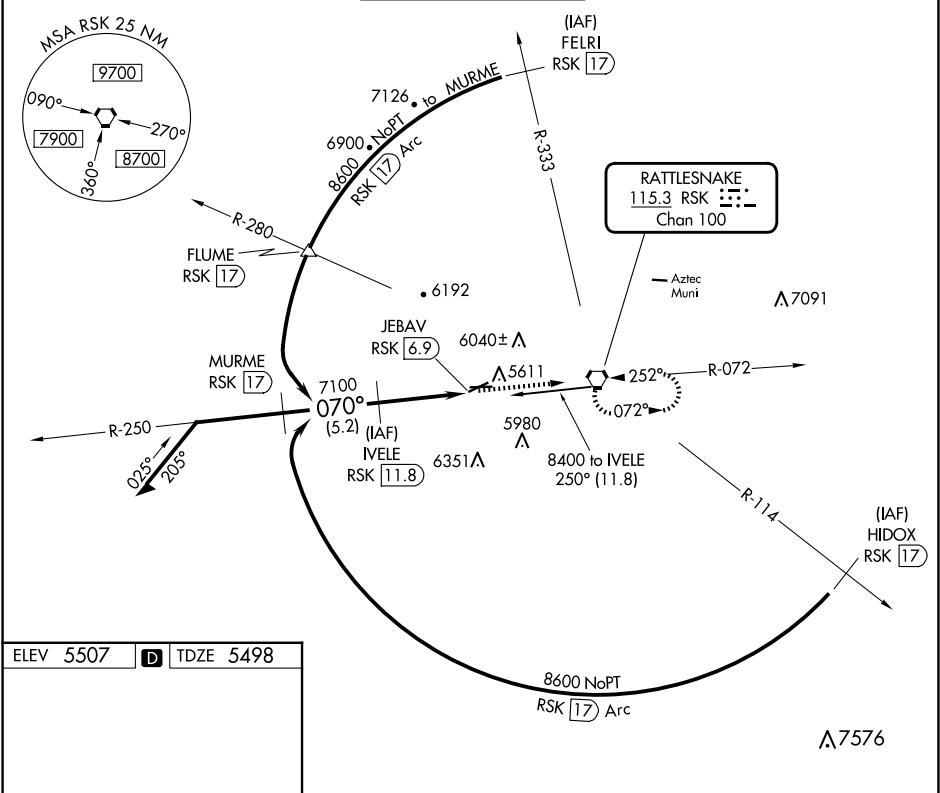
VOR/DME RWY 5

FOUR CORNERS RGNL (FMN)

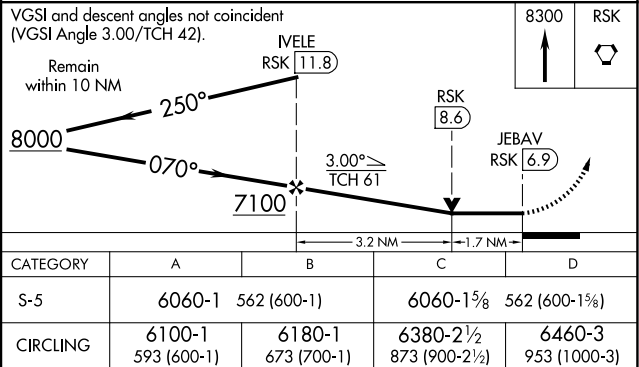
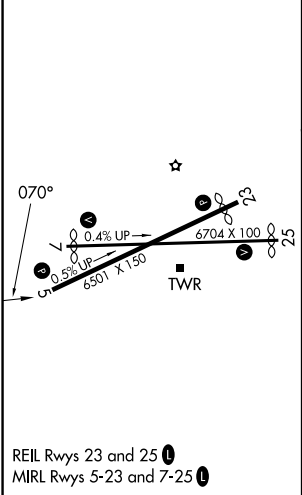
**⚠** Circling NA for Cat D southeast of Rwy 5 and south of Rwy 25. VDP NA when using Durango altimeter setting. When local altimeter not received, use Durango altimeter setting and increase all MDAs 260 feet and visibility Cats B/C/D and Circling Cats A/B/C ½ SM.

**MISSED APPROACH:**  
Climb to 8300 direct  
RSK VORTAC and hold.

ATIS <b>127.15</b>	DENVER CENTER <b>118.575 348.7</b>	FARMINGTON TOWER★ <b>118.9 (CTAF) 0 257.8</b>	GND CON <b>121.7</b>	UNICOM <b>122.95</b>
-----------------------	---------------------------------------	--	-------------------------	-------------------------



ELEV 5507	<b>D</b>	TDZE 5498
-----------	----------	-----------



SW-1, 10 JUL 2025 to 07 AUG 2025

SW-1, 10 JUL 2025 to 07 AUG 2025