

VORTAC RSK <b>115.3</b> Chan <b>100</b>	APP CRS <b>252°</b>	Rwy Ldg TDZE <b>5507</b> Apt Elev <b>5507</b>
-----------------------------------------------	------------------------	-----------------------------------------------------

VOR RWY 25

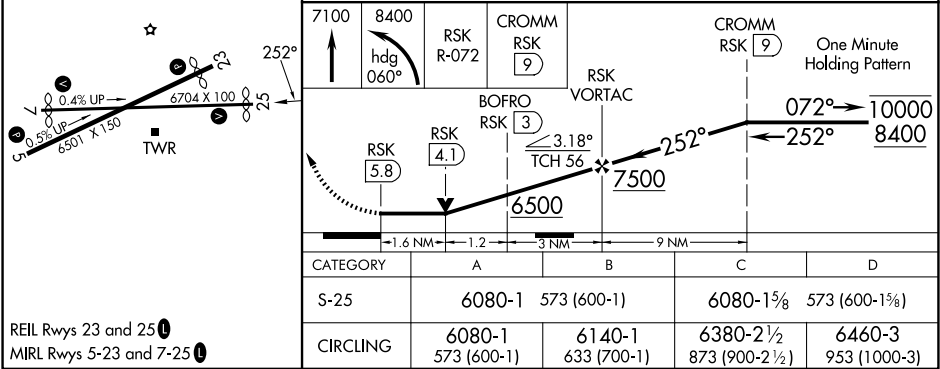
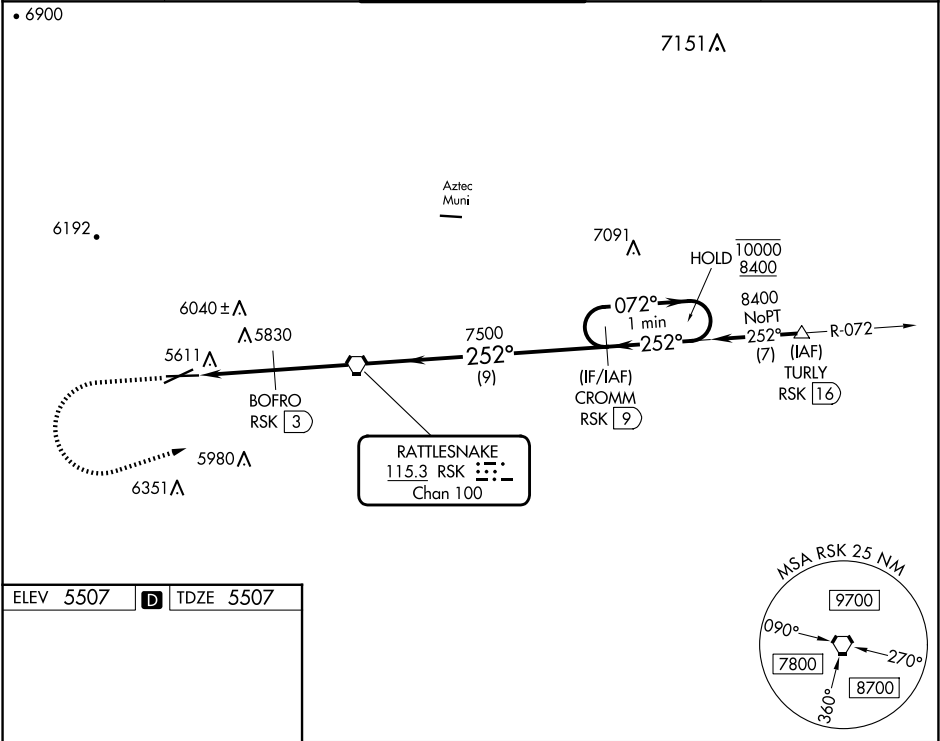
FOUR CORNERS RGNL (FMN)

DME required.

VDP NA when using Durango-La Plata County altimeter setting. Circling NA for Cat D southeast of Rwy 5 and south of Rwy 25. When local altimeter setting not received, use Durango-La Plata County altimeter setting and increase all MDAs 260 feet; increase S-25 visibility Cat B/C/D ¾ SM and Circling visibility Cat A/B/C ½ SM.

MISSED APPROACH: Climb to 7100 then climbing left turn to 8400 on heading 060° and on RSK VORTAC R-072 to CROMM/9 DME and hold.

ATIS <b>127.15</b>	DENVER CENTER <b>118.575 348.7</b>	FARMINGTON TOWER★ <b>118.9 (CTAF) 0 257.8</b>	GND CON <b>121.7</b>	UNICOM <b>122.95</b>
-----------------------	---------------------------------------	--------------------------------------------------	-------------------------	-------------------------



SW-1, 10 JUL 2025 to 07 AUG 2025

SW-1, 10 JUL 2025 to 07 AUG 2025