

WAAS CH 97518 W25A	APP CRS 256°	Rwy Ldg TDZE Apt Elev	6248 5507 5507
--	------------------------	-----------------------------	---

RNAV (GPS) RWY 25

FOUR CORNERS RGNL (FMN)

RNP APCH-GPS.

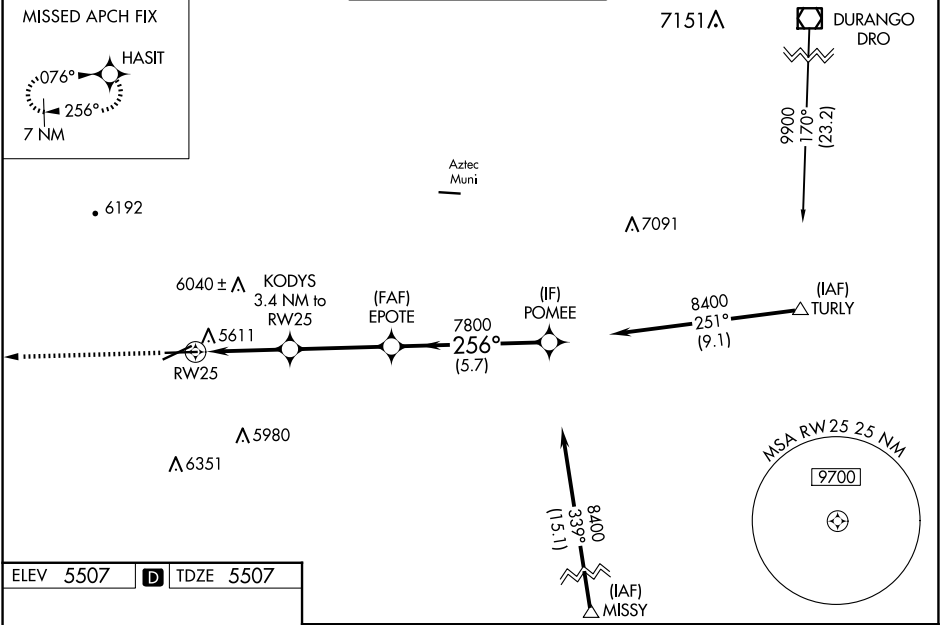
▼

▲

Baro-VNAV and VDP NA when using Durango altimeter setting. For uncompensated Baro-VNAV systems, LNAV/VNAV NA below -16°C or above 54°C. Circling NA for Cat D southeast of Rwy 5 and south of Rwy 25. When local altimeter setting not received, use Durango altimeter setting and increase LPV DA to 5950 feet and all visibilities $\frac{3}{8}$ SM. Increase LNAV/VNAV DA to 6312 feet and all visibilities $\frac{3}{8}$ SM. Increase all MDAs 260 feet and LNAV visibilities Cat C/D $\frac{3}{4}$ SM, and Circling visibility Cat B $\frac{1}{4}$ SM and Cat C $\frac{1}{2}$ SM.

MISSED APPROACH: Climb to 8000 direct HASIT and hold.

ATIS 127.15	DENVER CENTER 118.575 348.7	FARMINGTON TOWER ★ 118.9 (CTAF) 257.8	GND CON 121.7	UNICOM 122.95
-----------------------	---------------------------------------	---	-------------------------	-------------------------



ELEV 5507	D	TDZE 5507
-----------	----------	-----------

8000	HASIT
KODY	3.4 NM to RW25
EPOTE	7800
POMEE	8400
RW25	6640
GP 3.00°	TCH 56

CATEGORY	A	B	C	D
LPV DA	5707- $\frac{3}{4}$ 200 (200- $\frac{3}{4}$)			
LNAV/VNAV DA	6069-1 $\frac{5}{8}$ 562 (600-1 $\frac{5}{8}$)			
LNAV MDA	5880-1 373 (400-1)			
CIRCLING	6020-1 513 (600-1)	6140-1 633 (700-1)	6380-2 $\frac{1}{2}$ 873 (900-2 $\frac{1}{2}$)	6400-3 893 (900-3)