

WAAS CH 70714 W23A	APP CRS 233°	Rwy Ldg 5590 TDZE 5505 Apt Elev 5507
--	------------------------	---

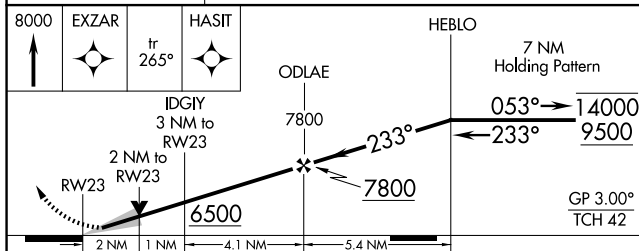
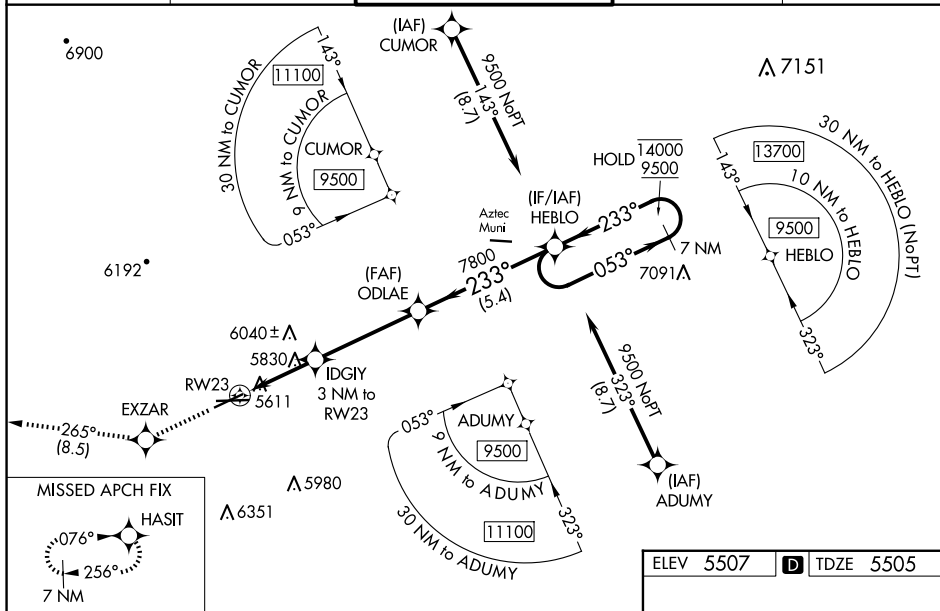
RNAV (GPS) RWY 23
FOUR CORNERS RGNL (FMN)


RNP APCH - GPS.

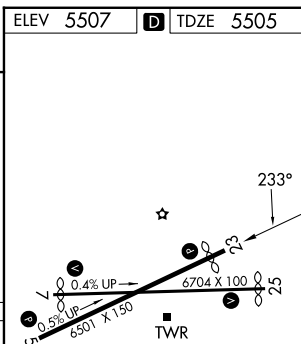
7 Baro-VNAV and VDP NA when using Durango altimeter setting. For uncompensated Baro-VNAV systems, LNAV/VNAV NA below -16°C or above 54°C. Circling NA for Cat D southeast of Rwy 5 and south of Rwy 25. When local altimeter setting not received, use Durango altimeter setting and increase LPV DA to 5998 feet and all visibilities $\frac{1}{2}$ SM. Increase LNAV/VNAV DA to 6274 feet and all visibilities 1 SM. Increase all MDAs 260 feet and LNAV visibilities Cat B $\frac{1}{4}$ SM, C/D $\frac{1}{2}$ SM and Circling visibility Cat A/B $\frac{1}{4}$ SM and Cat C $\frac{1}{2}$ SM.

MISSED APPROACH: Climb to 8000 direct EXZAR and on track 265° to HASIT and hold.

ATIS 127.15	DENVER CENTER 118.575 348.7	FARMINGTON TOWER* 118.9 (CTAF) 0 257.8	GND CON 121.7	UNICOM 122.95
----------------	--------------------------------	---	------------------	------------------



CATEGORY	A	B	C	D
LPV DA	5755-3/4 250 (300-3/4)			
LNAV/ VNAV DA	6031-1 1/2 526 (600-1 1/2)			
LNAV MDA	6080-1 575 (600-1)		6080-1 5/8 575 (600-1 5/8)	
 CIRCLING	6100-1 593 (600-1)	6140-1 633 (700-1)	6380-2 1/2 873 (900-2 1/2)	6400-3 893 (900-3)



REIL Rwys 23 and 25 **L**
MIRL Rwys 5-23 and 7-25 **L**