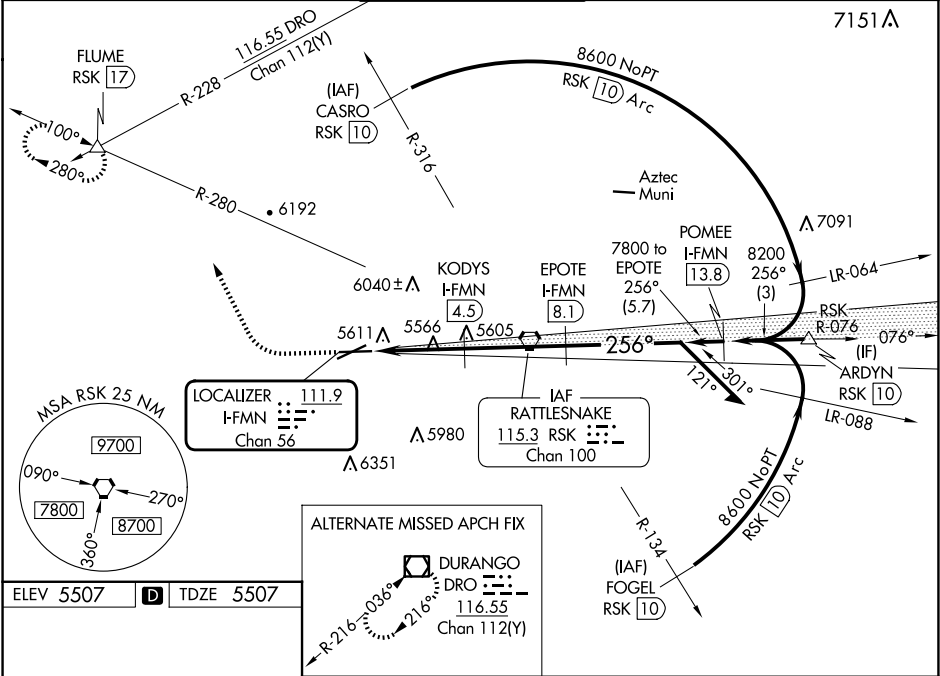


LOC/DME I-FMN	APP CRS	Rwy Ldg	6248
111.9	256°	TDZE	5507
Chan 56		Apt Elev	5507

ILS or LOC RWY 25
FOUR CORNERS RGNL (FMN)

DME required.	MISSED APPROACH: Climb to 6100 then climbing right turn to 9000 on heading 321° and on RSK VORTAC R-280 to FLUME INT and hold, continue climb-in-hold to 9000.
<p>⚠ VDP N/A with Durango altimeter setting. Circling N/A for Cat D southeast of Rwy 5 and south of Rwy 25. When local altimeter setting not received, use Durango altimeter setting and increase S-ILS 25 DA to 5950 feet and all visibilities ½ SM; increase all MDAs 260 feet and S-LOC 25 visibility Cat C/D ¾ SM, and Circling visibility Cat B ¼ SM and Cat C ½ SM.</p>	

ATIS 127.15	DENVER CENTER 118.575 348.7	FARMINGTON TOWER★ 118.9 (CTAF) 257.8	GND CON 121.7	UNICOM 122.95
----------------	--------------------------------	---	------------------	------------------



REIL Rws 23 and 25 **1**
 MIRL Rws 5-23 and 7-25 **1**

FAF to MAP 7 NM					
Knots	60	90	120	150	180
Min:Sec	7:00	4:40	3:30	2:48	2:20

Use I-FMN DME when on the localizer course.

CATEGORY	A	B	C	D
S-ILS 25	5707- ³ / ₄	200 (200- ³ / ₄)		
S-LOC 25	5880-1	373 (400-1)		
C CIRCLING	6020-1 513 (600-1)	6140-1 633 (700-1)	6380-2½ 873 (900-2½)	6400-3 893 (900-3)

SW-1, 10 JUL 2025 to 07 AUG 2025

SW-1, 10 JUL 2025 to 07 AUG 2025