

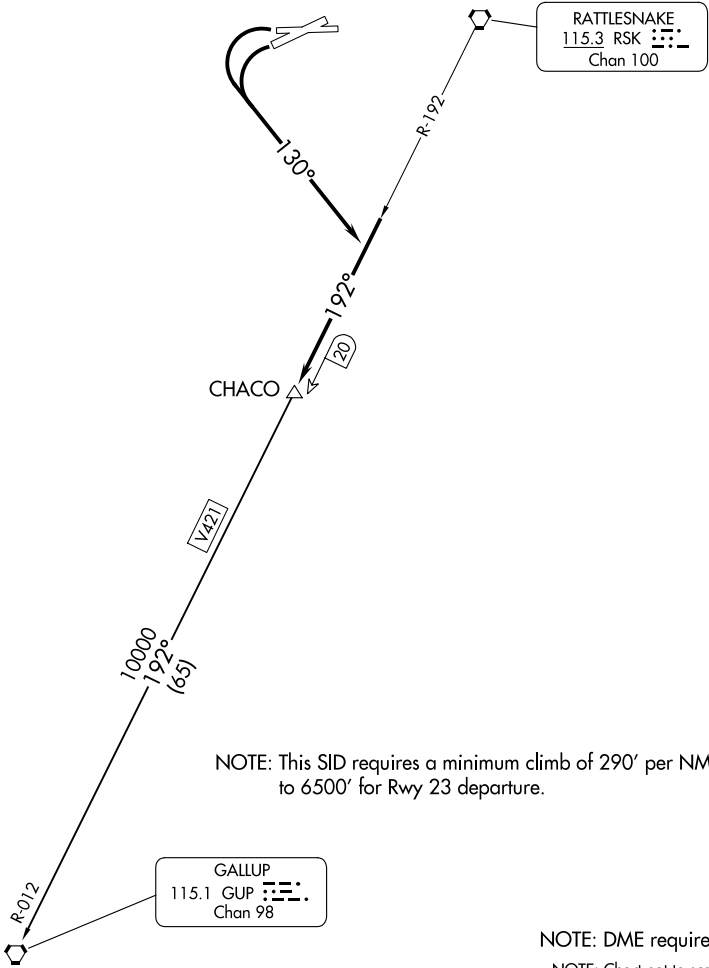
(CHACO1.CHACO) 23334

CHACO ONE DEPARTURE

AL-493 (FAA)

FOUR CORNERS RGNL (FMIN)
FARMINGTON, NEW MEXICO

ATIS
127.15
GND CON
121.7
FARMINGTON TOWER
118.9 (CTAF) 257.8
DENVER CENTER
118.575 348.7
UNICOM
122.95



NOTE: This SID requires a minimum climb of 290' per NM to 6500' for Rwy 23 departure.

NOTE: DME required.
NOTE: Chart not to scale.

DEPARTURE ROUTE DESCRIPTION

Aircraft departing Runways 23 or 25 turn left heading 130° to intercept RSK R-192 to CHACO. Thence via (assigned route).
GALLUP TRANSITION (CHACO1.GUP): From over CHACO via RSK R-192 and GUP R-012 to GUP VORTAC.

CHACO ONE DEPARTURE
(CHACO1.CHACO) 05DEC96

FARMINGTON, NEW MEXICO
FOUR CORNERS RGNL (FMIN)

SW-1, 10 JUL 2025 to 07 AUG 2025

SW-1, 10 JUL 2025 to 07 AUG 2025