

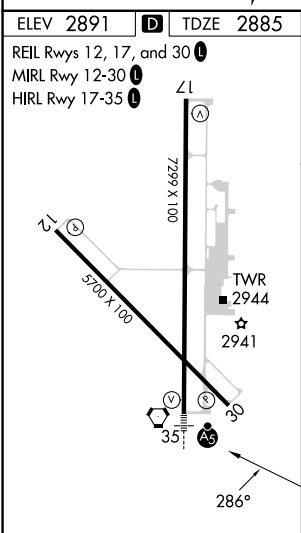
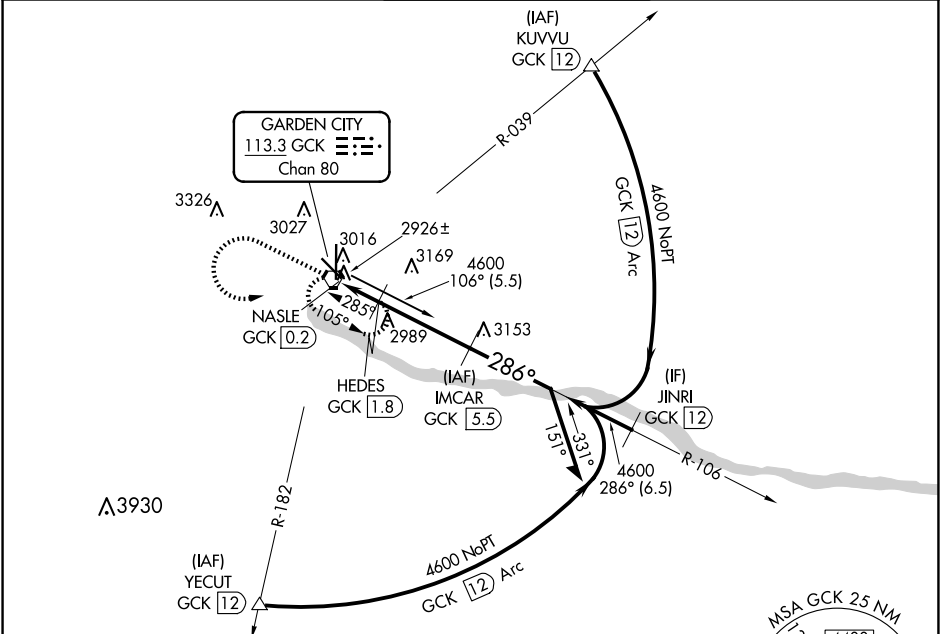
VORTAC GCK	APP CRS	Rwy Idg	5700
113.3	286°	TDZE	2885
Chan 80		Apt Elev	2891






VOR/DME RWY 30  
GARDEN CITY RGNL (GCK)

**⚠** When local altimeter setting not received, use Dodge City Rgnl altimeter setting and increase all MDA 140 feet and Circling Cat C visibility ½ SM and Circling Cat D visibility ¼ SM.

**MISSED APPROACH:**  
Climb to 4000 then climbing left turn to 4600 direct GCK VORTAC and hold.

ASOS 121,325	KANSAS CITY CENTER 125.2 285.425	GARDEN CITY TOWER ★ 118.15 (CTAF) 0 254.4	GND CON 119.0 254.4	UNICOM 122.95
-----------------	-------------------------------------	----------------------------------------------	------------------------	------------------



<div><div><div>4000</div><div>↑</div></div><div><div>4600</div><div></div></div><div><div>GCK</div><div></div></div></div> <div><div>IMCAR GCK [5.5]</div><div><div>Remain within 10 NM</div><div><div>106°</div><div>4600</div></div></div></div> <div><div><div>HEDES GCK [1.8]</div><div>≤ 2.99°</div><div>TCH 45</div></div><div><div>NASLE GCK [0.2]</div><div><div>3440</div><div>286°</div><div>4600</div></div></div></div> <div><div><div>1.6 NM</div><div>3.7 NM</div></div></div> <tr><td>CATEGORY</td><td>A</td><td>B</td><td>C</td><td>D</td></tr> <tr><td>S-30</td><td colspan="3">3240-1 355 (400-1)</td><td>3240-1¼ 355 (400-1¼)</td></tr> <tr><td> CIRCLING</td><td>3320-1 429 (500-1)</td><td>3360-1 469 (500-1)</td><td>3480-1½ 589 (600-1½)</td><td>3480-2 589 (600-2)</td></tr>					CATEGORY	A	B	C	D	S-30	3240-1 355 (400-1)			3240-1¼ 355 (400-1¼)	 CIRCLING	3320-1 429 (500-1)	3360-1 469 (500-1)	3480-1½ 589 (600-1½)	3480-2 589 (600-2)
CATEGORY	A	B	C	D															
S-30	3240-1 355 (400-1)			3240-1¼ 355 (400-1¼)															
 CIRCLING	3320-1 429 (500-1)	3360-1 469 (500-1)	3480-1½ 589 (600-1½)	3480-2 589 (600-2)															

NC-2, 10 JUL 2025 to 07 AUG 2025

NC-2, 10 JUL 2025 to 07 AUG 2025