

VORTAC GCK 113.3 Chan 80	APP CRS 344°	Rwy Idg 7299 TDZE 2885 Apt Elev 2891
---------------------------------------	------------------------	---

VOR RWY 35
GARDEN CITY RGNL (GCK)

DME required.

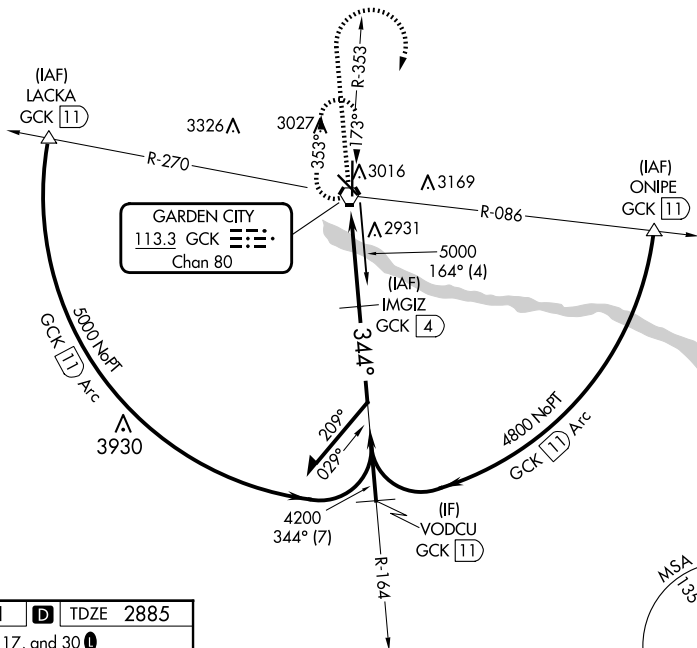
T For inop ALS, increase S-35 Cat C visibility to $\frac{7}{8}$ SM.
A Inop table does not apply to S-35 Cat D.

MALSR



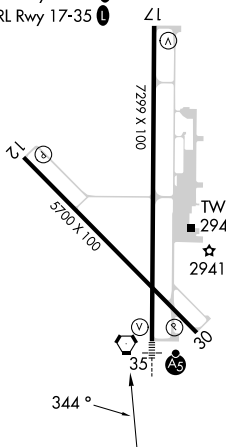
MISSED APPROACH: Climb to 4000 then climbing right turn to 4800 direct GCK VORTAC and hold.

ASOS 121.325	KANSAS CITY CENTER 125.2 285.425	GARDEN CITY TOWER ★ 118.15 (CTAF) 0 254.4	GND CON 119.0 254.4	UNICOM 122.95
-----------------	-------------------------------------	--	------------------------	------------------



ELEV 2891	D	TDZE 2885
-----------	----------	-----------

REIL Rwy 12, 17, and 30 **L**
MIRL Rwy 12-30 **L**
HIRL Rwy 17-35 **L** \angle l



GCD

CATEGORY	A	B	C	D
S-35	3200-½ 315 (400-½)		3200-¾ 315 (400-¾)	3200-1 315 (400-1)
C CIRCLING	3320-1 429 (500-1)	3360-1 469 (500-1)	3480-1½ 589 (600-1½)	3480-2 589 (600-2)