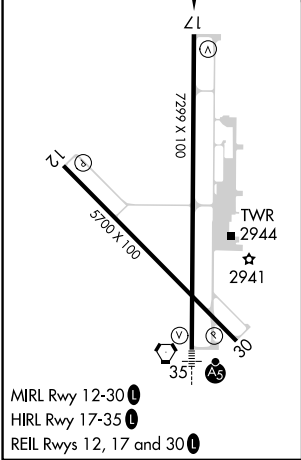
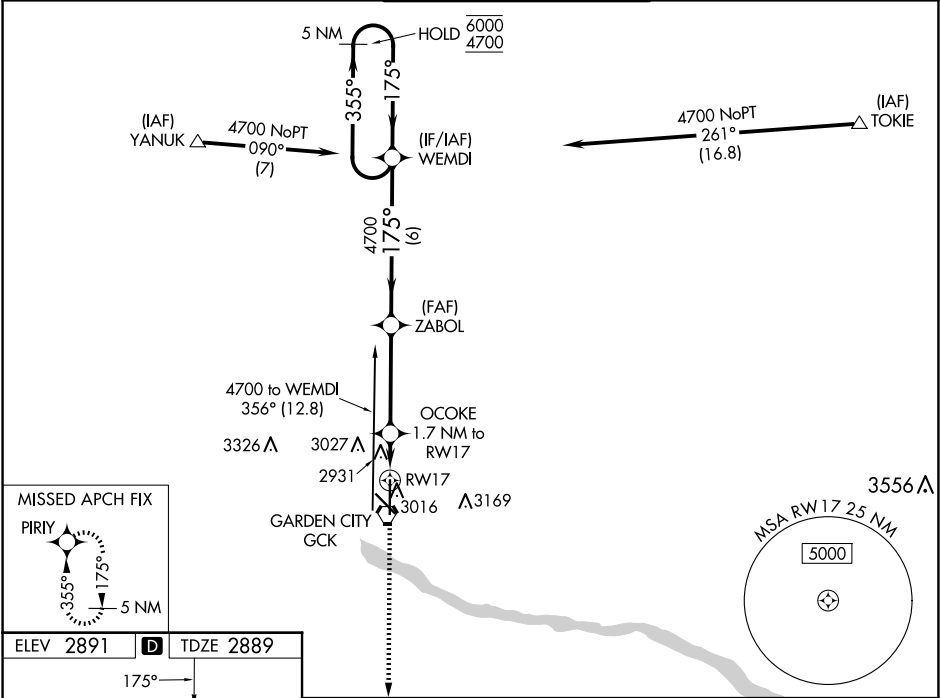


WAAS CH 42803 W17A	APP CRS 175°	Rwy Idg TDZE Apt Elev	7299 2889 2891
--	------------------------	-----------------------------	---

RNAV (GPS) RWY 17
GARDEN CITY RGNL (GCK)

RNP APCH - GPS.		MISSED APPROACH: Climb to 4800 direct PIRIY and hold.		
▼ For uncompensated Baro-VNAV systems, LNAV/VNAV ▲ NA below -20°C or above 54°C.				
ASOS 121.325	KANSAS CITY CENTER 125.2 285.425	GARDEN CITY TOWER* 118.15 (CTAF) 0 254.4	GND CON 119.0 254.4	UNICOM 122.95



4800 PIRIY	OCOKE 1.7 NM to RW17	ZABOL 4700	WEMDI 4700	5 NM Holding Pattern
0.9 NM to RW17	0.8	3.9 NM	6 NM	355° 175° 6000 4700
3460	4700	GP 3.00° TCH 39		
CATEGORY	A	B	C	D
LPV DA	3089-3/4 200 (200-3/4)			
LNAV/VNAV DA	3139-3/4 250 (300-3/4)			
LNAV MDA	3200-1 311 (400-1)	3200-7/8 311 (400-7/8)		
CIRCLING	3320-1 429 (500-1)	3360-1 469 (500-1)	3480-1 1/2 589 (600-1 1/2)	3480-2 589 (600-2)

NC-2, 10 JUL 2025 to 07 AUG 2025

NC-2, 10 JUL 2025 to 07 AUG 2025