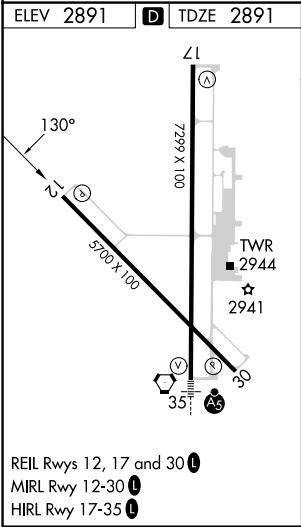
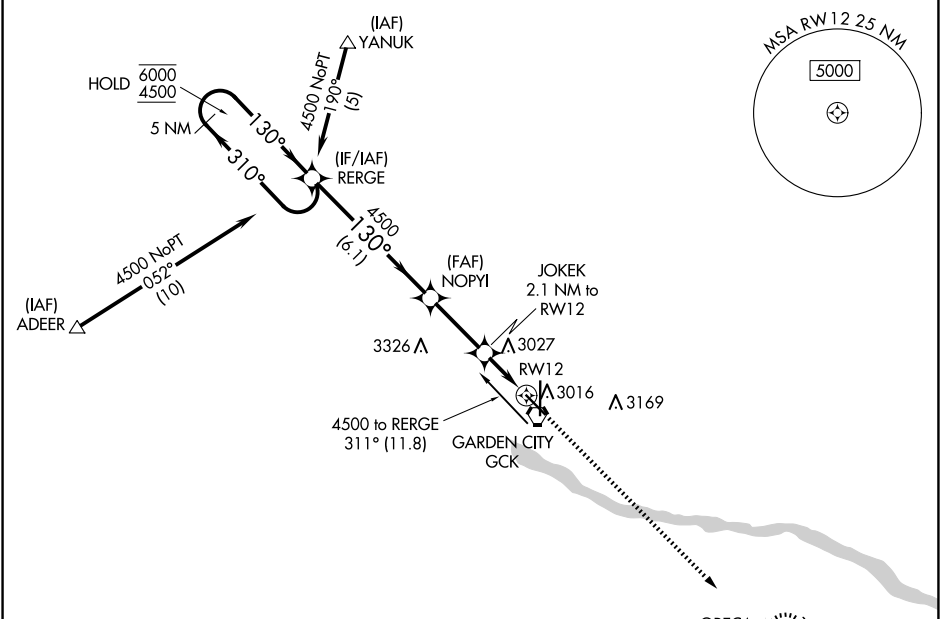


WAAS CH 77803 W12A	APP CRS 130°	Rwy ldg TDZE 2891 Apt Elev 2891
--	------------------------	---

RNAV (GPS) RWY 12

GARDEN CITY RGNL (GCK)

RNP APCH - GPS.		MISSED APPROACH: Climb to 4600 direct ORECA and hold.		
For uncompensated Baro-VNAV systems, procedure NA below -20°C or above 54°C.				
ASOS 121.325	KANSAS CITY CENTER 125.2 285.425	GARDEN CITY TOWER* 118.15 (CTAF) 0 254.4	GND CON 119.0 254.4	UNICOM 122.95



ELEV 2891	D	TDZE 2891
3930		ORECA
5 NM Holding Pattern		4600 ORECA
6000 ← 310° 4500 → 130°		4500
GP 3.00° TCH 47		JOKEK 2.1 NM to RW12
6.1 NM		3620
2.8 NM		1 NM to RW12
1.2 NM		1 NM
CATEGORY		A B C D
LPV DA		3141-1 250 (300-1)
LNAV/VNAV DA		3141-1 250 (300-1)
LNAV MDA		3240-1 349 (400-1)
CIRCLING		3320-1 429 (500-1) 3360-1 469 (500-1) 3480-1½ 589 (600-1½) 3480-2 589 (600-2)

NC-2, 10 JUL 2025 to 07 AUG 2025

NC-2, 10 JUL 2025 to 07 AUG 2025