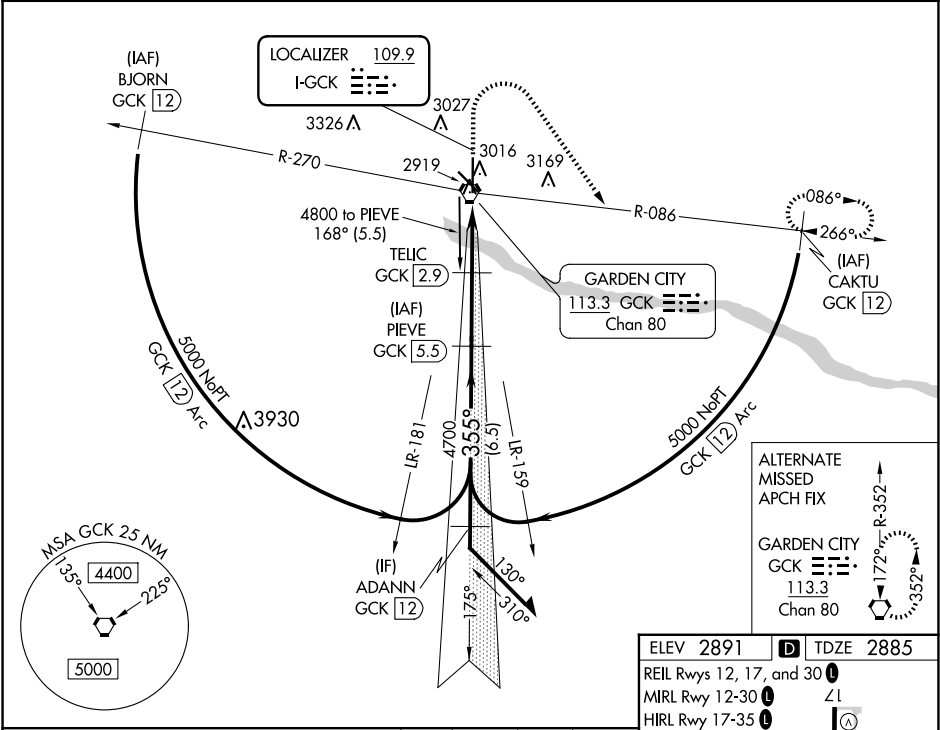


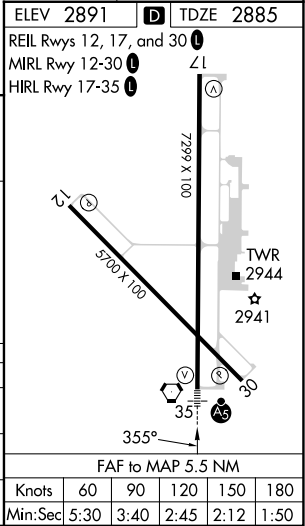
LOC I-GCK 109.9	APP CRS 355°	Rwy Idg TDZE Apt Elev	7299 2885 2891
---------------------------	------------------------	-----------------------------	---

ILS or LOC RWY 35
GARDEN CITY RGNL (GCK)

DME required. ▼ For inop ALS, increase S-LOC 35 Cats C/D visibility to 7/8 SM. ▲		MALSR 	MISSED APPROACH: Climb to 4000 then climbing right turn to 5000 on GCK VORTAC R-086 to CAKTU/GCK VORTAC 12 DME and hold.	
ASOS 121.325	KANSAS CITY CENTER 125.2 285.425	GARDEN CITY TOWER* 118.15 (CTAF) 0 254.4	GND CON 119.0 254.4	UNICOM 122.95



VGSI and ILS glidepath not coincident (VGSI Angle 3.00/TCH 41). Remain within 10 NM		4000	5000	GCK R-086	CAKTU GCK 12
4800		4700	3860	GCK 0.8	GCK 0.1
GS 3.00° TCH 59		2.6 NM	2.1 NM	0.8	
CATEGORY	A	B	C	D	
S-ILS 35		3085-1/2	200 (200-1/2)		
S-LOC 35		3180-1/2	295 (300-1/2)		
CIRCLING	3320-1 429 (500-1)	3360-1 469 (500-1)	3480-1 1/2 589 (600-1 1/2)	3480-2 589 (600-2)	



NC-2, 10 JUL 2025 to 07 AUG 2025

NC-2, 10 JUL 2025 to 07 AUG 2025