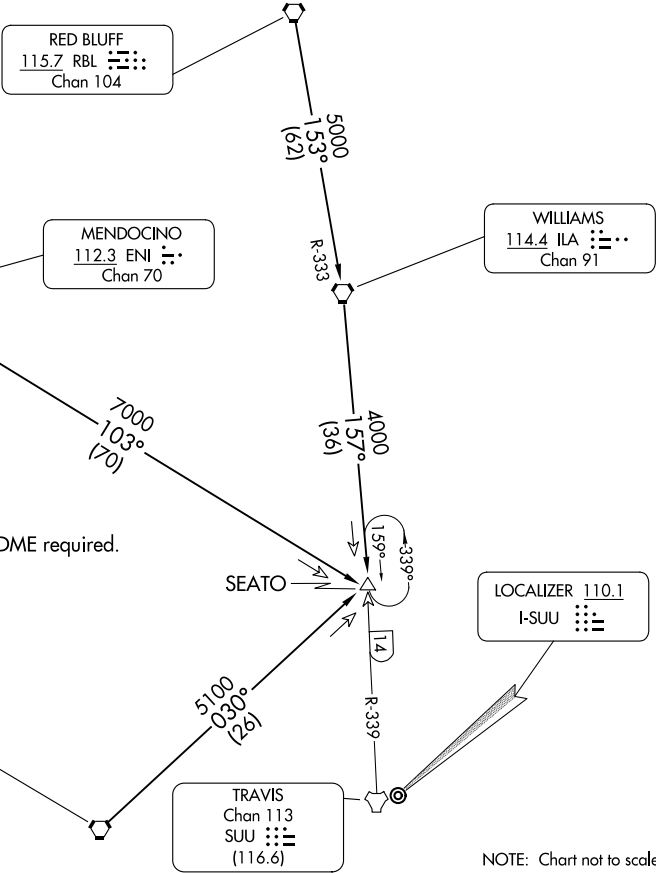


(SEATO.SEATO4) 23334  
SEATO FOUR ARRIVAL

AL-488 (FAA) TRAVIS AFB (KSUU)  
FAIRFIELD, CALIFORNIA

TRAVIS APP CON  
126.6 281.45 (N)  
119.9 322.325 (S)  
D-ATIS  
135.55 292.125



NOTE: RADAR and DME required.

NOTE: Chart not to scale.

ARRIVAL ROUTE DESCRIPTION

MENDOCINO TRANSITION (ENI.SEATO4): From over ENI VORTAC via ENI R-103 to SEATO INT. Thence . . .

RED BLUFF TRANSITION (RBL.SEATO4): From over RBL VORTAC via RBL R-153 and ILA R-333 to ILA VORTAC, then via ILA R-157 to SEATO INT. Thence . . .

SCAGGS ISLAND TRANSITION (SGD.SEATO4): From over SGD VORTAC via SGD R-030 to SEATO INT. Thence . . .

. . . . From over SEATO INT:

RWY 3L/R: Expect RADAR vectors for ILS or LOC RWY 3L approach.

RWY 21L/R: Expect RADAR vectors for ILS or LOC RWY 21L approach.

LOST COMMUNICATIONS:

RWY 3L via SEATO then TACAN RWY 3L.

RWY 21R via SEATO then TACAN RWY 21R.