

RNAV (GPS) RWY 03R

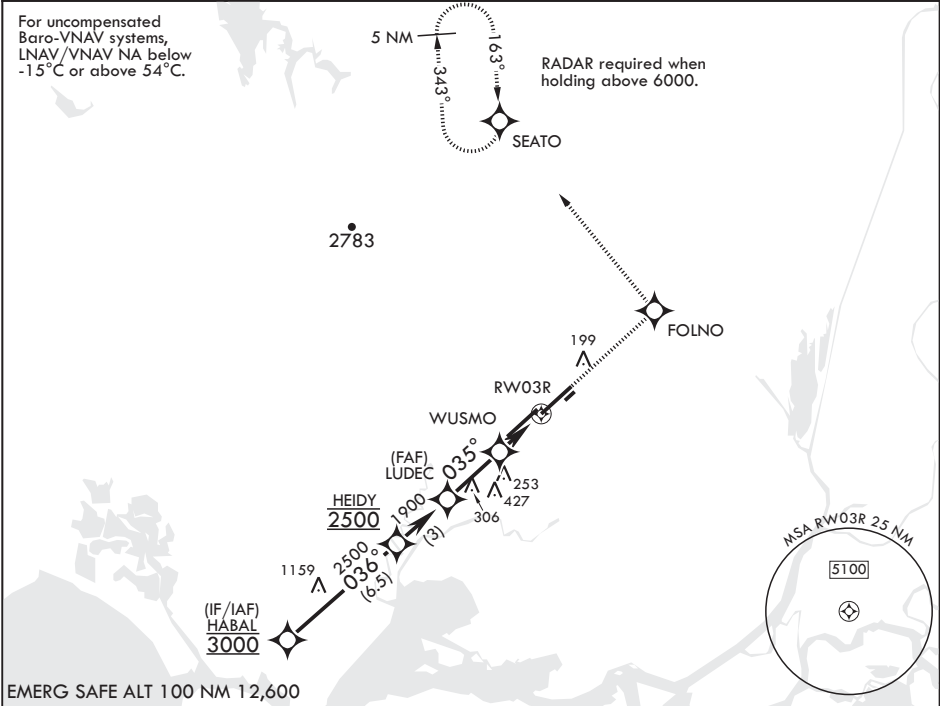
WAAS CH <b>98057</b> <b>W03B</b>	APCH CRS <b>035°</b>	Rwy Idg TDZE <b>59</b> Arpt Elev <b>63</b>
--	-------------------------	--

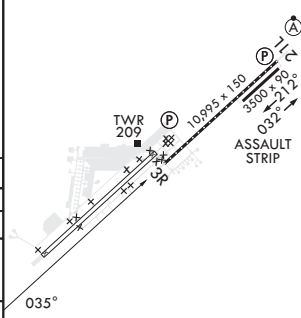
- (USAF)

TRAVIS AFB (KSUU)

RNP APCH	MISSED APPROACH: Climb to 4500 direct FOLNO, track 308° to SEATO and hold, continue climb-in-hold to 4500.
* Circling NA NW of RWY 3L-21R.	

ATIS <b>135.55 292.125</b>	APP CON <b>119.9 322.325 (S)</b> <b>126.6 281.45 (N)</b>	TOWER <b>120.75 254.4</b>	GND CON <b>121.8 289.4</b>	CLNC DEL <b>127.55 335.8</b>
-------------------------------	--	------------------------------	-------------------------------	---------------------------------



HABAL		4500		FOLNO	tr 308°	SEATO	ELEV 63	TDZE 59
3000		HEIDY		VGSI and RNAV glidepath not coincident (VGSI angle 2.50°/TCH 69°)				
036°		2500		LUDEC	035°	WUSMO	1.3 NM to RW03R	
GP 3.00°		1900			900			
TCH 50				3.1 NM	2.5 NM			
CATEGORY	A	B	C	D	E			
LPV DA	259/40		200	(200-¾)				
LNAV/VNAV DA	340/45 281 (300-¾)	351/45 292 (300-¾)	359/45 300 (300-¾)	370/45	311 (400-¾)			
LNAV MDA	460/55	401 (400-1)	460/60	401	(400-1½)			
CIRCLING*	560-1 497 (500-1)	660-1 597 (600-1)	1100-3 1037 (1100-3)	1200-3	1137 (1200-3)			
						HIRL Rwys 3L-21R, 3R-21L MIRL Rwy 032°-212° TDZL/CL Rwys 3R, 21L		

RNAV (GPS) RWY 03R

SW-2, 10 JUL 2025 to 07 AUG 2025

SW-2, 10 JUL 2025 to 07 AUG 2025