

SBAS Chan <b>62106</b> <b>W21A</b>	APCH CRS <b>215°</b>	Rwy Idg <b>10,995</b> TDZE <b>58</b> Arpt Elev <b>63</b>
--	-------------------------	--

ILS or LOC or RNAV (GPS) RWY 21L

[USAF]

TRAVIS AFB (KSUU)

RNP APCH. RNAV1-GPS or RADAR required for ILS, LOC.

RADAR required for CAT E aircraft for full procedure off of SEATO.

- ▼
- \* When ALS inop, increase RVR to 40, vis to  $\frac{3}{4}$  miles.
  - \*\* When ALS inop, increase CAT AB RVR to 55, vis to 1 mile; CAT CDE vis to  $1\frac{1}{8}$  miles.
  - \*\*\*Circling not authorized NW of Rwy 3L-21R.

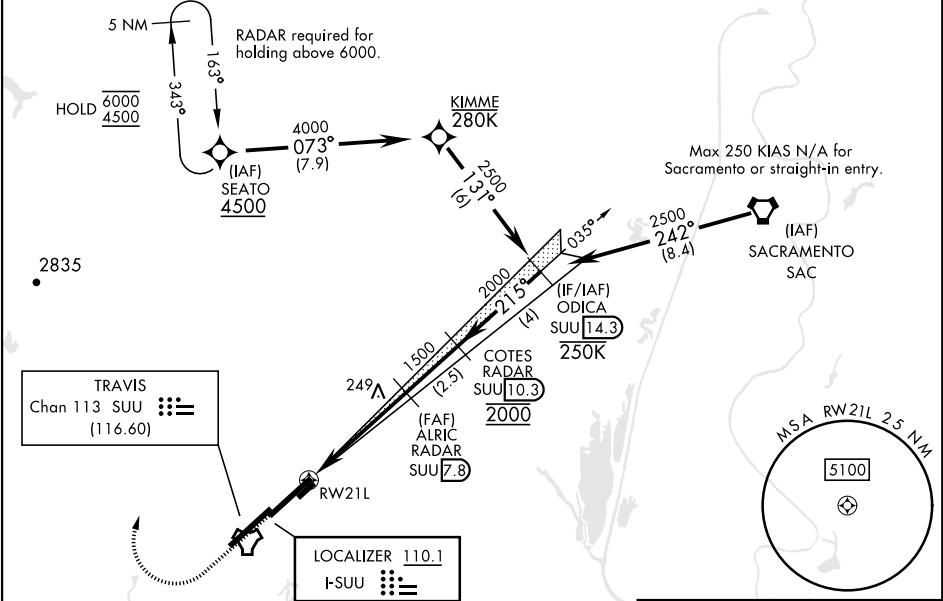
ALSF-2



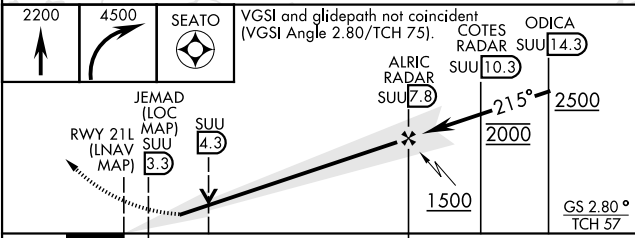
MISSED APPROACH: Climb to 2200 then climbing right turn to 4500 direct SEATO and hold, continue climb in hold to 4500.

ATIS <b>135.55 292.125</b>	APP CON <b>119.9 322.325 (S)</b> <b>126.6 281.45 (N)</b>	TOWER <b>120.75 254.4</b>	GND CON <b>121.8 289.4</b>	CLNC DEL <b>127.55 335.8</b>
-------------------------------	--	------------------------------	-------------------------------	---------------------------------

† When TDZ/CL inop, increase RVR to 24, RVR 18 authorized use of FD or AP or HUD to DA.

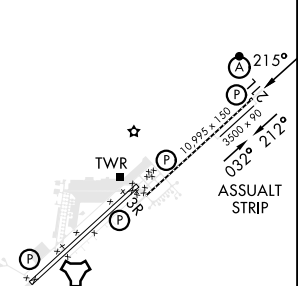


EMERG SAFE ALT 100 NM 13,000



CATEGORY	A	B	C	D	E
S-ILS 21L**†	258/18		200	(200-½)	
LPV DA**†	258/18		200	(200-½)	
S-LOC 21L**	500/24	442 (500-½)	500/45	442 (500-¾)	
RNAV MDA**	500/24	442 (500-½)	500/45	442 (500-¾)	
CIRCLING***	560-1 497 (500-1)	660-1 597 (600-1)	1100-3 1037(1100-3)	1200-3	1137 (1200-3)

ELEV	63	TDZE	58
------	----	------	----



HIRL Rwy 3R-21L MRL Rwy 032° - 212° TDZL/CL Rwy 3R, 21L	FAF to MAP 4.5 NM				
Knots	60	90	120	150	180
Min:Sec	4:30	3:00	2:15	1:48	1:30

ILS or LOC or RNAV (GPS) RWY 21L

SW-2, 10 JUL 2025 to 07 AUG 2025

SW-2, 10 JUL 2025 to 07 AUG 2025