

ILS RWY 21L (CAT II)

LOC I-SUU <b>110.1</b>	APCH CRS <b>215°</b>	Rwy Idg TDZE Arprt Elev <b>10,995</b> <b>58</b> <b>63</b>
---------------------------	-------------------------	--

[USAF]

TRAVIS AFB (KSUU)

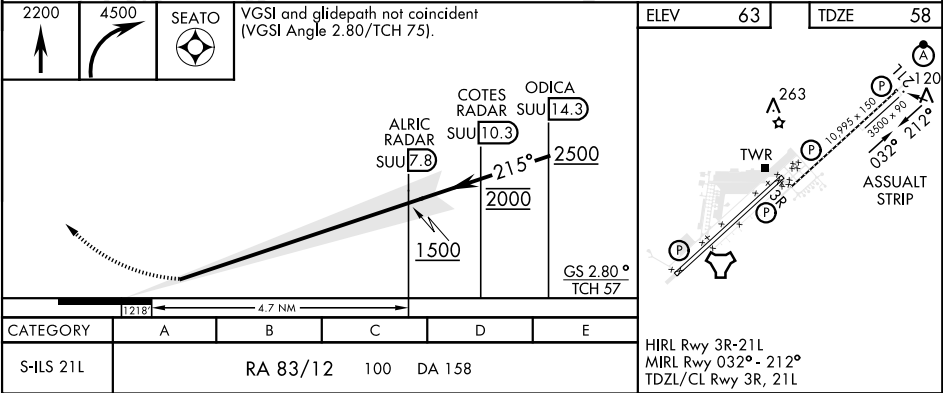
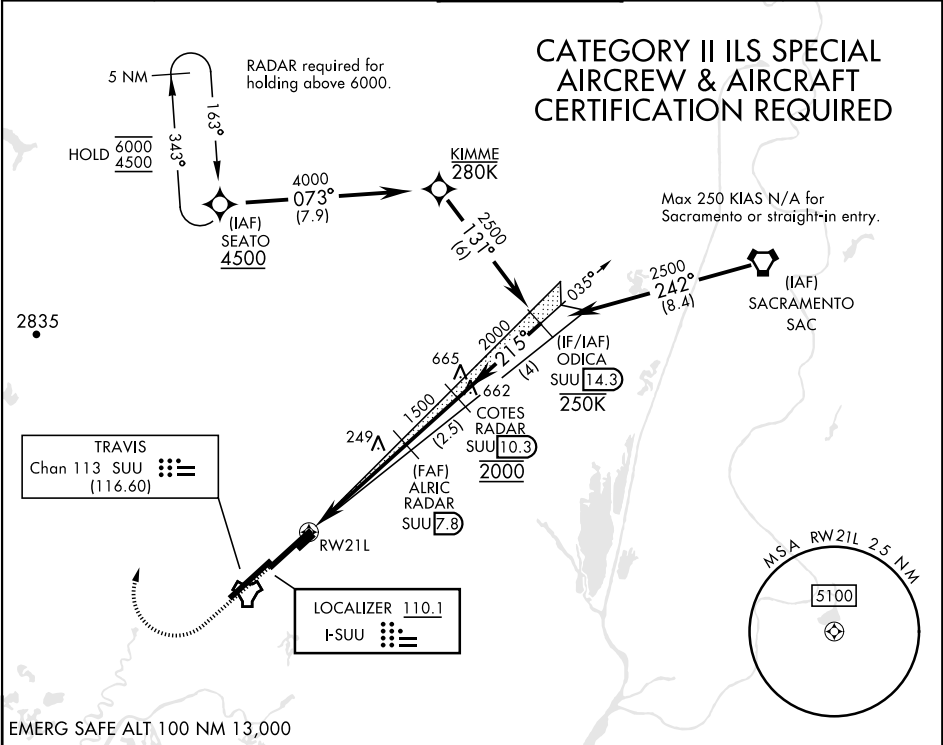
RNAV1 - GPS or RADAR required.

RADAR required for CAT E aircraft for full procedure off of SEATO.

ALSIF-2

MISSED APPROACH: Climb to 2200 then climbing right turn to 4500 direct SEATO and hold, continue climb in hold to 4500.

ATIS <b>135.55 292.125</b>	APP CON <b>119.9 322.325 (S)</b> <b>126.6 281.45 (N)</b>	TOWER <b>120.75 254.4</b>	GND CON <b>121.8 289.4</b>	CLNC DEL <b>127.55 335.8</b>
-------------------------------	--	------------------------------	-------------------------------	---------------------------------



ILS RWY 21L (CAT II)

SW-2, 10 JUL 2025 to 07 AUG 2025

SW-2, 10 JUL 2025 to 07 AUG 2025