

TACAN LDK Chan 125 (117.8)	APP CRS 241°	Rwy Idg TDZE 164 Apt Elev 170
---	------------------------	---

TACAN RWY 22

TUSCALOOSA NTL (TCL)

▼

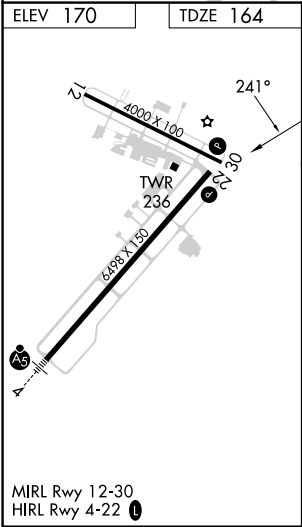
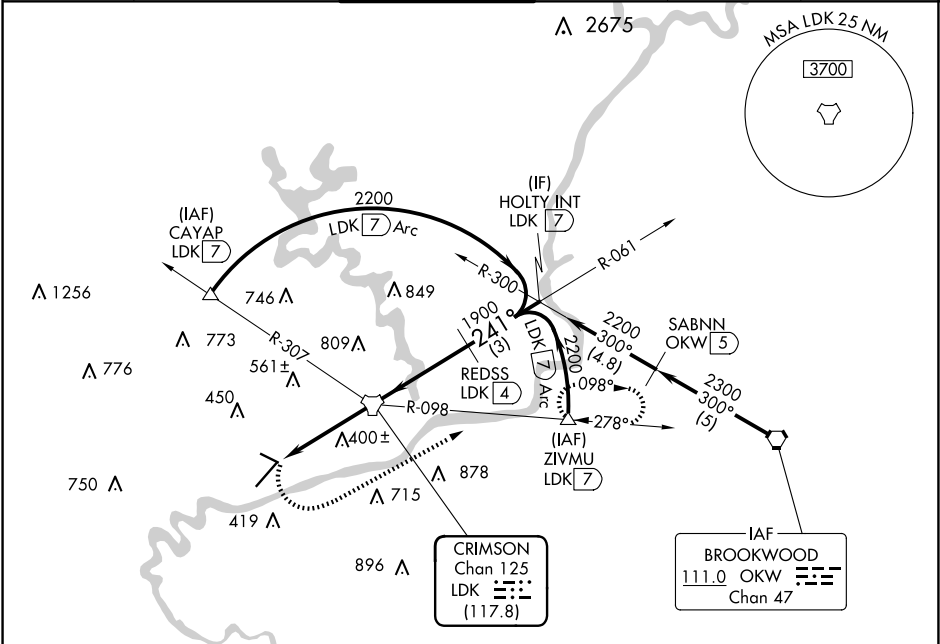
▲

Circling Rwy 12, 30 NA at night.

Rwy 22 helicopter visibility reduction below ¾ SM NA.

MISSED APPROACH: Climbing left turn to 2300 on heading 060° and LDK TACAN R-098 to ZIVMU/LDK 7 DME and hold.

ASOS 132.825	BIRMINGHAM APP CON 120.15 269.25	TUSCALOOSA TOWER ★ 126.3 (CTAF) 0 256.7	GND CON 121.8 257.95	CLNC DEL 120.775	UNICOM 122.95
------------------------	--	--	--------------------------------	----------------------------	-------------------------



	2300 hdg 060°	LDK R-098	ZIVMU △		LDK TACAN	REDSS LDK 4	HOLTY INT LDK 7	2200
				LDK 4	LDK 2.2			1900
				1.8 NM	2.2 NM	4 NM	3 NM	
CATEGORY	A	B	C	D				
S-22	800-1	636 (700-1)	800-1¾	636 (700-1¾)				
CIRCLING	800-1	630 (700-1)	960-2¼ 790 (800-2¼)	960-2½ 790 (800-2½)				