



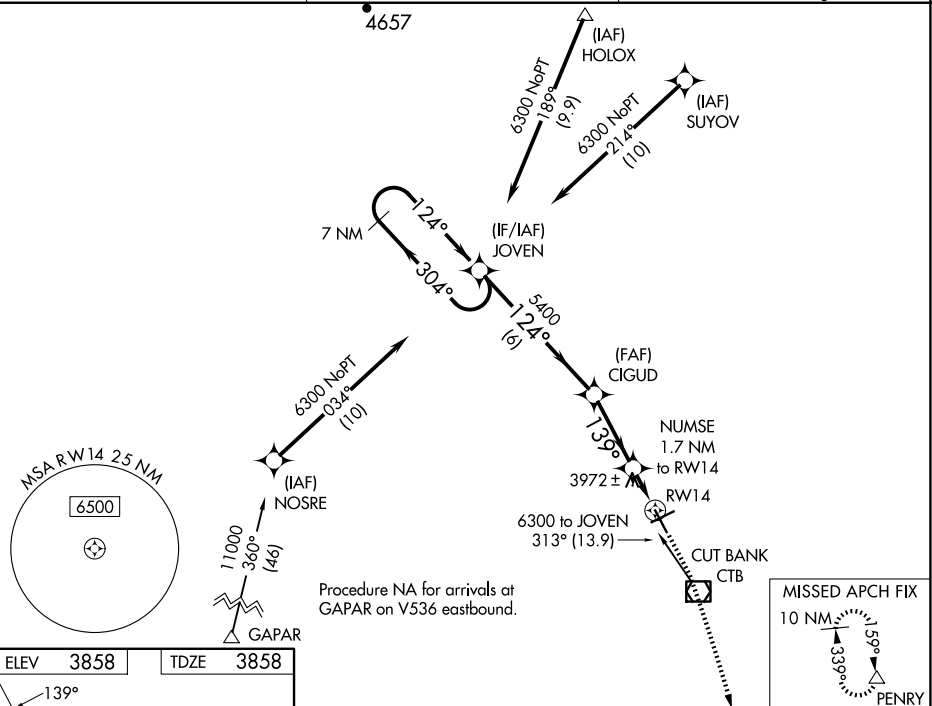
25163

WAAS CH 93537 W14A	APP CRS 139°	Rwy Ldg 5300 TDZE 3858 Apt Elev 3858
--	------------------------	---

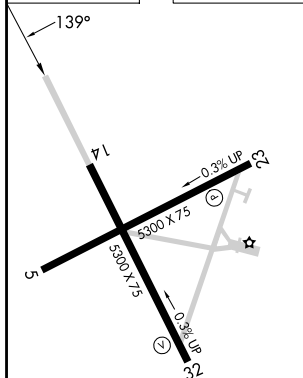
RNAV (GPS) RWY 14
CUT BANK INTL (CTB)

 For uncompensated Baro-VNAV systems, LNAV/VNAV NA below -25°C (-13°F) or above 51°C (124°F).  DME/DME RNP-0.3 NA. -28°C	MISSED APPROACH: Climb to 4400 then climbing right turn to 9000 direct PENRY and hold.
--	--

ASOS 119.025	SALT LAKE CITY CENTER 133.4 285.4	UNICOM 123.0 (CTAF) L
------------------------	---	--



ELEV	3858		TDZE	3858
------	------	--	------	------



REIL Rwy 32 **L**
MIRL Rwys 5-23 and 14-32 **L**

CUT BANK, MONTANA
Orig-B 07DEC17

48°37'N-112°23'W

CUT BANK INTL (CTB)
RNAV (GPS) RWY 14

NW-1, 10 JUL 2025 to 07 AUG 2025