

WAAS
CH **90300**
W05A

APP CRS
054°

Rwy Idg
TDZE
Apt Elev
4301
79
79

RNAV (GPS) RWY 5

DELAND MUNI-SIDNEY H TAYLOR FLD (DED)

RNP APCH.

▼

▲

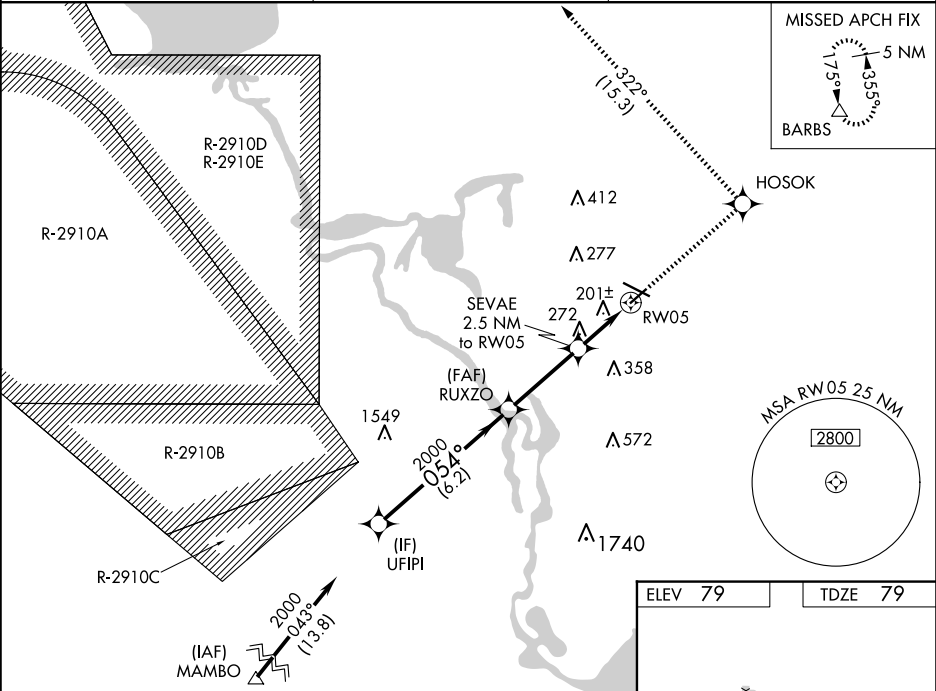
For uncompensated Baro-VNAV systems, LNAV/VNAV NA below -15°C (5°F) or above 54°C (130°F). Rwy 5 helicopter visibility reduction below ¾ SM NA. When local altimeter setting not received, use Daytona Beach Intl altimeter setting and increase all DAs 38 feet and all MDAs 40 feet; increase LPV all Cats, LNAV/VNAV all Cats, and LNAV Cat D visibility ¼ mile.

MISSED APPROACH: Climb to 3000 direct HOSOK and left turn on track 322° to BARBS and hold.

AWOS-3
119.575

DAYTONA APP CON
125.35 322.3

UNICOM
123.075 (CTAF) 0



VGSI and RNAV glidepath not coincident (VGSI Angle 3.00/TCH 52).

3000 HOSOK

BARBS

tr 322°

*LNAV only.

UFIPI

RUXZO

SEVAE

RW05

GP 3.00° TCH 40

2000

054°

2000

*900

*1.4 NM to RW05

6.2 NM

3.3 NM

1.1 NM

1.4 NM

CATEGORY	A	B	C	D
LPV DA	385-1 306 (400-1)			
LNAV/VNAV DA	577-1¾ 498 (500-1¾)			
LNAV MDA	580-1 501 (600-1)		580-1⅜ 501 (600-1⅜)	

HIRL Rwy 12-30 0

MIRL Rwy 5-23 0

REIL Rws 12 and 30 0