

23278

# RNAV (GPS) RWY 30

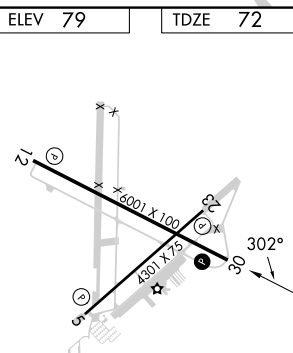
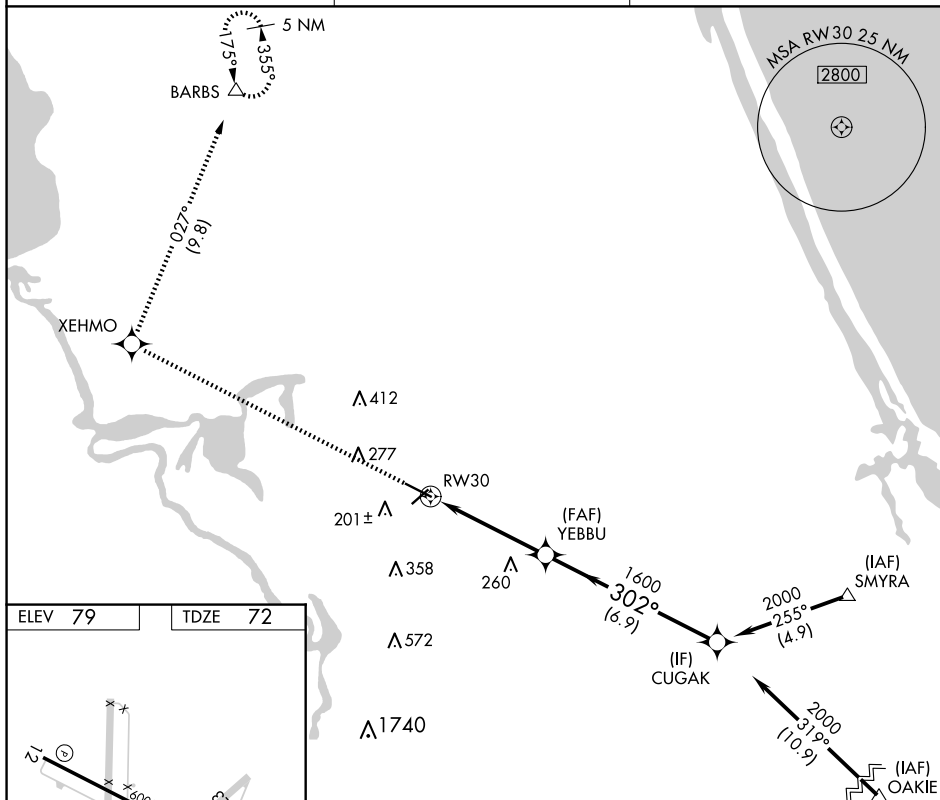
## DELAND MUNI-SIDNEY H TAYLOR FLD (DED)

**T** Rwy 30 helicopter visibility reduction below  $\frac{3}{4}$  SM NA. VDP NA when  
**A** using Daytona Beach Intl altimeter setting. When local altimeter setting  
not received, use Daytona Beach Intl altimeter setting and increase all MDAs  
40 feet.

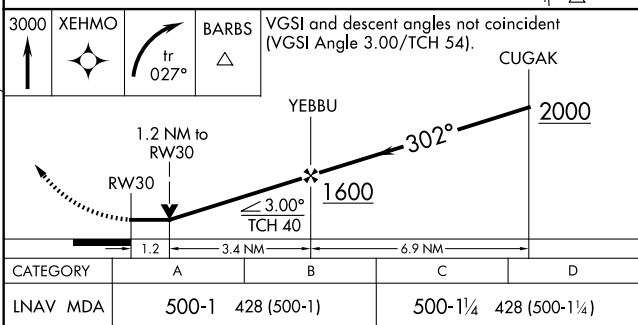
**MISSED APPROACH:** Climb to 3000  
direct XEHMO and right turn on track  
027° direct BARBS and hold.

DAYTONA APP CON  
125.35 322.3

UNICOM  
123.075 (CTAF) **L**



HIRL Rwy 12-30 **L**  
MIRL Rwy 5-23 **L**  
REIL Rwy 12 and 30 **L**



DELAND, FLORIDA  
Orig-B 18JUL19

DELAND MUNI-SIDNEY H TAYLOR FLD (DED)  
29°04'N-81°17'W **RNAV (GPS) RWY 30**