

23278

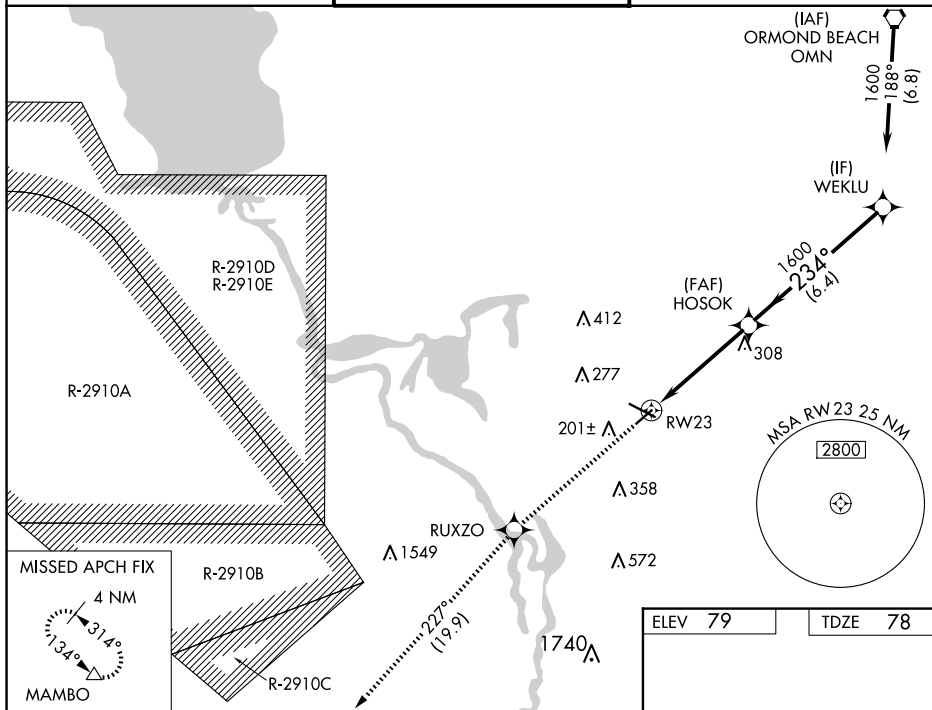
# RNAV (GPS) RWY 23

DELAND MUNI-SIDNEY H TAYLOR FLD (DED)

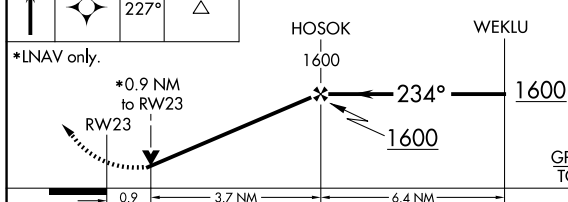
**▼** For uncompensated Baro-VNAV systems, LNAV/VNAV NA below -15°C (5°F) or above 54°C (130°F).  
**▲** Baro-VNAV and DPV NA when using Daytona Beach Intl altimeter setting. Rwy 23 helicopter visibility reduction below  $\frac{3}{4}$  SM NA. When local altimeter setting not received, use Daytona Beach Intl altimeter setting and increase all DA 38 feet and all MDA 40 feet, increase LPV visibility  $\frac{1}{2}$  SM all Cats.

**MISSED APPROACH:**  
Climb to 3000 direct  
RUXZO and on track  
227° to MAMBO  
and hold.

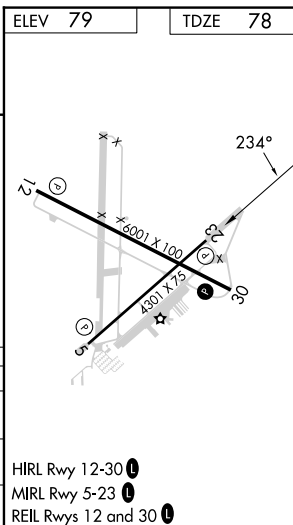
UNICOM  
123.075 (CTAF) **L**



3000 ▲	RUXZO ▲	tr	MAMBO	VGSI and RNAV glidepath not coincident (VGSI Angle 3.00/TCH 67).
-----------	------------	----	-------	--



CATEGORY		A	B	C	D
LPV	DA	374-1 296 (300-1)			
LNAV/ VNAV	DA	414-1¼ 336 (400-1¼)			
LNAV	MDA	420-1 342 (400-1)			



DELAND MUNI-SIDNEY H TAYLOR FLD (DED)  
29°04'N-81°17'W **RNAV (GPS) RWY 23**