

ALTUS, OKLAHOMA

VOR or TACAN RWY 36L

VORTAC LTS	APCH CRS	Rwy Idg
109.8	360°	13,440
Chan 35		TDZE 1354
		Arpt Elev 1382

AL-482 [USAF]

ALTUS AFB (KLTS)

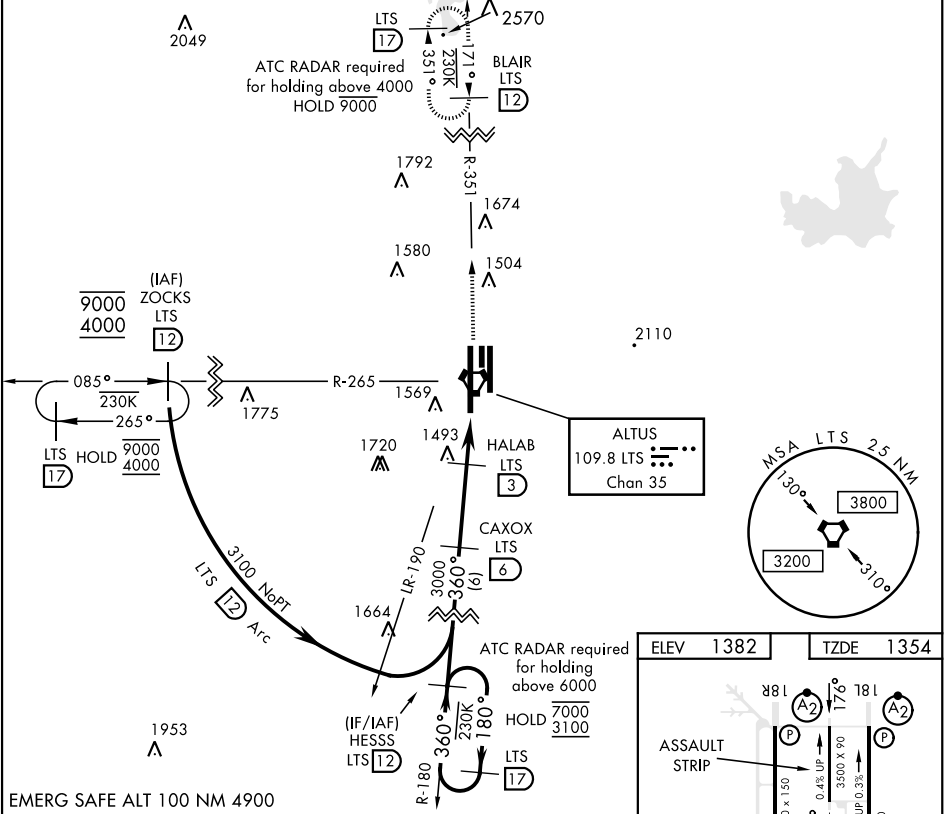
DME required.

▲ * When ALS inop, increase CAT AB RVR to 55 and vis to 1 mile, CAT CDE RVR to 60 and vis to 1½ miles.
** Circling not authorized W of Rwy 18R-36L.

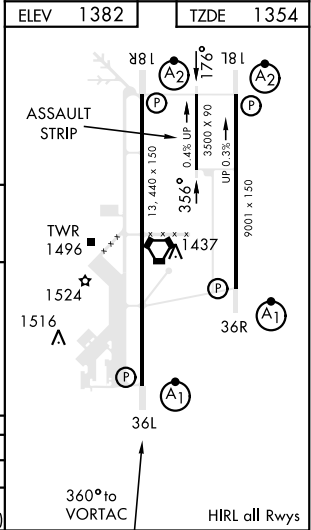
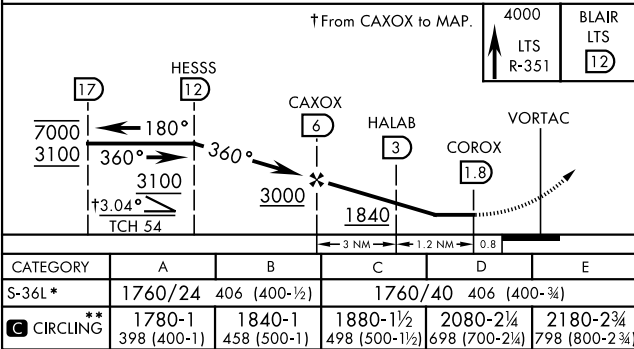


MISSED APPROACH: Climb to 4000 on LTS VORTAC R-351 to BLAIR and hold.

ATIS ★	FORT WORTH CENTER	APP CON	TOWER ★	GND CON	CLNC DEL
109.8 273.5	133.5 350.35	125.1 353.7	119.65 254.4	121.85 275.8	120.65 284.7



EMERG SAFE ALT 100 NM 4900



ALTUS, OKLAHOMA

34°40'N-99°16'W

ALTUS AFB (KLTS)

Amtd 4 14JUL22

VOR or TACAN RWY 36L

SC-1, 10 JUL 2025 to 07 AUG 2025

SC-1, 10 JUL 2025 to 07 AUG 2025