

ALTUS, OKLAHOMA

VOR or TACAN RWY 18R

VORTAC LTS <b>109.8</b> Chan <b>35</b>	APCH CRS <b>171°</b>	Rwy Idg <b>13,440</b> TDZE <b>1378</b> Arpt Elev <b>1382</b>
--	-------------------------	--

AL-482 [USAF]

ALTUS AFB (KLTS)

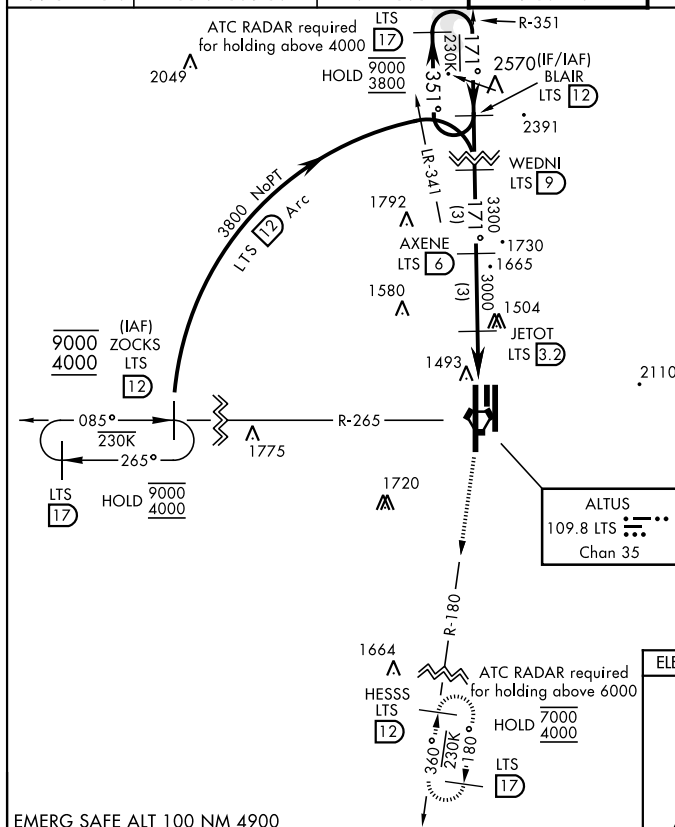
DME required.

**T** \* When ALS inop, increase CAT AB RVR to 55 and vis to 1 mile,  
CAT CDE RVR to 60 and vis to 1½ miles.  
\*\* Circling not authorized W of Rwy 18R-36L.

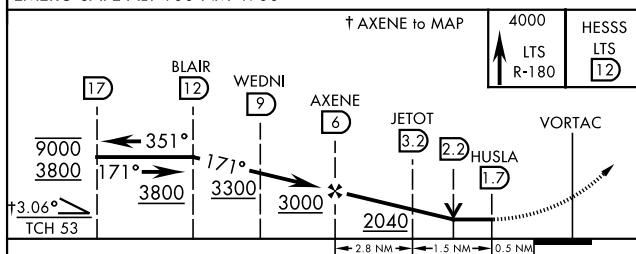
SALSF


**MISSED APPROACH:** Climb to 4000 on  
LTS VORTAC R-180 to HESSS and hold.

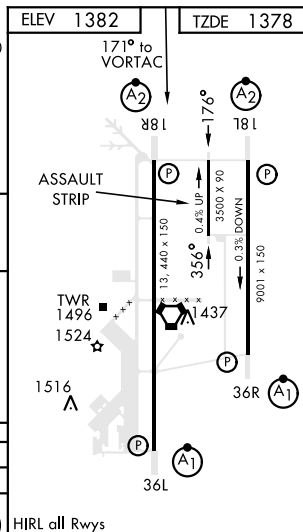
ATIS ★	FORT WORTH CENTER	APP CON	TOWER ★	GND CON	CLNC DEL
109.8 273.5	133.5 350.35	125.1 353.7	119.65 254.4	121.85 275.8	120.65 284.7



EMERG SAFE ALT 100 NM 4900



CATEGORY	A	B	C	D	E
S-18R *	1760/40	382 (400-¾)	1760/40	382	(400-¾)
 CIRCLING **	1780-1 398 (400-1)	1840-1 458 (500-1)	1880-1½ 498 (500-1½)	2080-2¼ 698 (700-2¼)	2180-2¾ 798 (800-2¾)



ALTUS, OKLAHOMA

34°40'N-99°16'W

ALTUS AFB (KLTS)

Amdt 4 14JUL22

VOR or TACAN RWY 18R

SC-1, 10 JUL 2025 to 07 AUG 2025

SC-1, 10 JUL 2025 to 07 AUG 2025