

ALTUS, OKLAHOMA

RNAV (GPS) Z RWY 18R

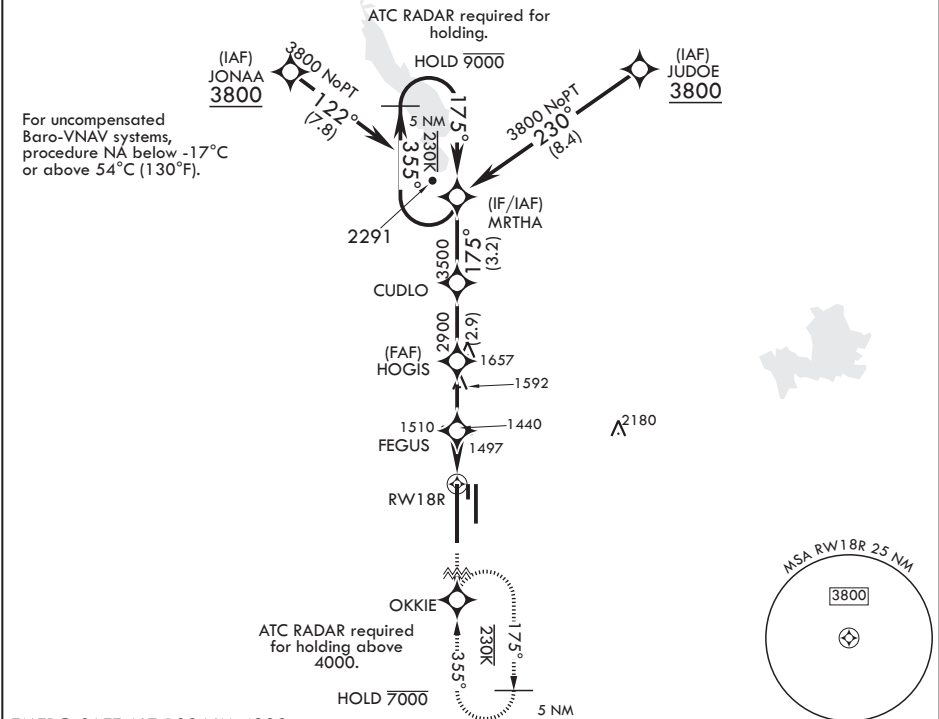
APCH CRS	Rwy Idg	13,440
175°	TDZE	1378
	Arpt Elev	1382

AL-482 (USAF)

ALTUS AFB (KLTS)

RNP APCH. DME/DME RNP-0.3 NA			SALS		MISSED APPROACH: Climb to 4000 direct OKKIE and hold.	
<div><div>⚠</div><div>* When ALS inop increase RVR to 45, vis to 7/8 mile. ** When ALS inop, increase CAT AB RVR to 55, vis to 1 mile; CAT CDE RVR to 60, vis to 1 1/8 miles.</div></div>			<div><div>A2</div><div>1000 500 0</div></div>			
ATIS★ 109.8 273.5	FORT WORTH CENTER 133.5 350.35	APP CON 125.1 353.7	TOWER★ 119.65 254.4	GND CON 121.85 275.8	CLNC DEL 120.65 284.7	

*** Circling NA W of Rwy 18R-36L.



EMERG SAFE ALT 100 NM 4900

<p>GP 3.00° † TCH 53</p>						ELEV 1382		TDZE 1378
<p>MRTHA</p> <p>355°</p> <p>175°</p> <p>3500</p> <p>HOGIS</p> <p>FEGUS</p> <p>2900</p> <p>2040</p> <p>‡ 0.9 NM to RW18R</p> <p>2.6 NM</p> <p>2 NM</p>						<p>4000</p> <p>OKKIE</p> <p>175° to RW18R</p> <p>176°</p> <p>0.4% DOWN</p> <p>0.3% DOWN</p> <p>9001 x 150</p> <p>36R</p> <p>36L</p>		
CATEGORY	A	B	C	D	E			
LNAV/VNAV DA*	1660/40		282		(300-¾)			
LNAV MDA**	1760/40 382 (400-¾)		1760/45		382 (400-¾)			
CIRCLING***	1780-1 398 (400-1)	1840-1 458 (500-1)	1880-1½ 498 (500-1½)	2080-2¼ 698 (700-2¼)	2180-2¾ 798 (800-2¾)			

ALTUS, OKLAHOMA

34°40'N - 99°16'W

ALTUS AFB (KLTS)

Amdt 3 14JUL22

RNAV (GPS) Z RWY 18R

SC-1, 10 JUL 2025 to 07 AUG 2025

SC-1, 10 JUL 2025 to 07 AUG 2025