

APCH CRS	Rwy Idg	13,440
175°	TDZE	1378
	Arpt Elev	1382

AL-482 (USAF)

ALTUS AFB (KLTS)

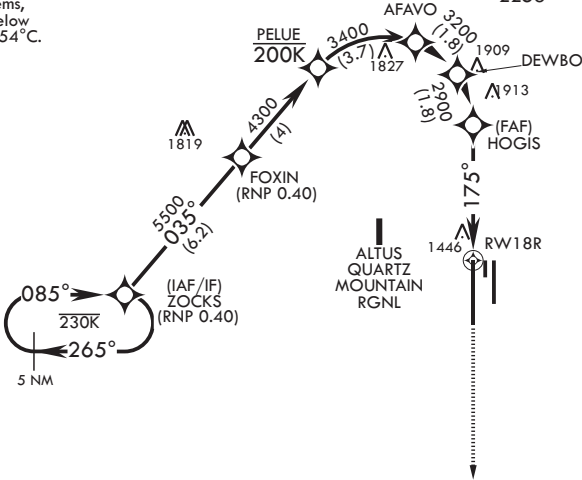
RNP AR APCH - RF	SALS	MISSED APPROACH: Climb to 4000 on track 175° to OKKIE and hold.
* When ALS inop, increase RVR to 45, vis to 7/8 mile. ** When ALS inop, increase RVR to 60, vis to 1 1/8 miles.		

ATIS★ 109.8 273.5	APP CON 125.1 353.7	TOWER★ 119.65 254.4	GND CON 121.85 275.8	CLNC DEL 120.65 284.7
----------------------	------------------------	------------------------	-------------------------	--------------------------

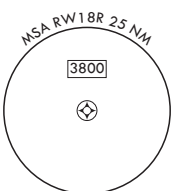
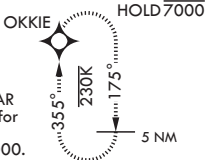
For uncompensated Baro-VNAV systems, procedure NA below -17°C or above 54°C.

Max 200 KIAS until DEWBO

2258



AUTHORIZATION
REQUIRED
FOR USE BY 97
AMW ACFT ONLY



EMERG SAFE ALT 100 NM 4900

ZOCKS	FOXIN	PELUE	AFAVO	DEWBO	HOGIS	RW18R
8000	5500	4300	3400	3200	2900	175°
GP 3.00°	TCH 53					4.6 NM
CATEGORY	A	B	C	D		
RNP 0.10 DA*	1679/40	301	(300-3/4)			
RNP 0.30 DA**	1783/50	405	(500-1)			

