

ALTUS, OKLAHOMA

RNAV (GPS)-B

APCH CRS 293°	Rwy Idg TDZE Arpt Elev	N/A N/A 1382
-------------------------	------------------------------	-----------------------------------------

AL-482 (USAF)

ALTUS AFB (KLTS)

RNP APCH. DME/DME RNP-0.3 NA

MISSED APPROACH: Climb to 2200, then climbing right turn to 4000 direct JATTU and hold.

ATC RADAR required.

T Circling NA W of Rwy 18R-36L.

ATIS★ 109.8 273.5	FORT WORTH CENTER 133.5 350.35	APP CON 125.1 353.7	TOWER★ 119.65 254.4	GND CON 121.85 275.8	CLNC DEL 120.65 284.7
----------------------	-----------------------------------	------------------------	------------------------	-------------------------	--------------------------

2055

2373

$$\begin{matrix} \Delta \\ 2180 \end{matrix}$$

DOE
(FAF)
DOBKI

29
(6)

	<u>6000</u>
HOLD	3400

FOR USE BY 97
AMW ACFT ONLY

EMERG SAFE ALT 100 NM 4900



Fly Visual
293°
2.3 NM

DOBKE
2700

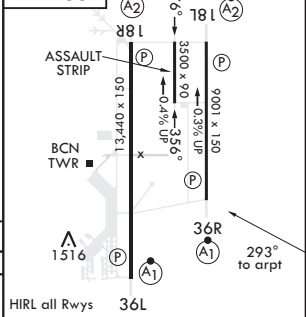
OLIRY

$$\begin{array}{r} 113^\circ \rightarrow \\ \hline 293^\circ \end{array} \begin{array}{r} 6000 \\ 3400 \end{array}$$

2.3 ← 3 NM-

CATEGORY	A	B	C	D	E
<input checked="" type="checkbox"/> CIRCLING	NA			2080-3 698 (700-3)	2180-3 798 (800-3)

ELEV 1382



ALTUS, OKLAHOMA

34°40'N - 99°16'W

ALTUS AFB (KLTS)

Amdt 4 14JUL22
TERPS

RNAV (GPS)-B

SC-1, 10 JUL 2025 to 07 AUG 2025

SC-1, 10 JUL 2025 to 07 AUG 2025