

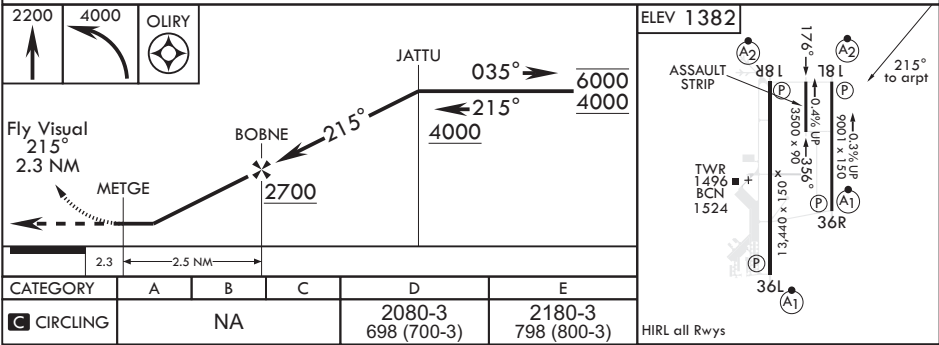
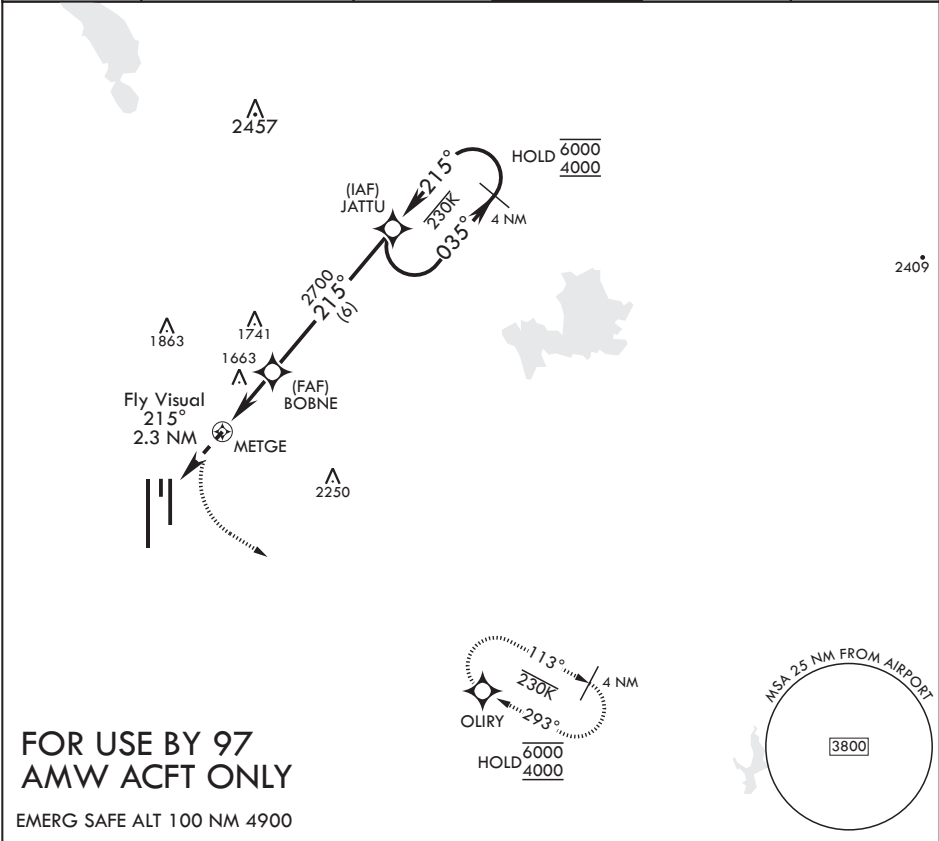
APCH CRS	Rwy Idg	N/A
215°	TDZE	N/A
	Arprt Elev	1382

AL-482 (USAF)

ALTUS AFB (KLTS)

RNP APCH. DME/DME RNP 0.3 NA	MISSED APPROACH: Climb to 2200, then climbing left turn to 4000 direct OLIRY and hold.
ATC RADAR REQUIRED	
Circling NA W of Rwy 18R-36L.	

ATIS ★ 109.8 273.5	FORT WORTH CENTER 133.5 350.35	APP CON 125.1 353.7	TOWER ★ 119.65 254.4	GND CON 121.85 275.8	CLNC DEL 120.65 284.7
-----------------------	-----------------------------------	------------------------	-------------------------	-------------------------	--------------------------



SC-1, 10 JUL 2025 to 07 AUG 2025

SC-1, 10 JUL 2025 to 07 AUG 2025