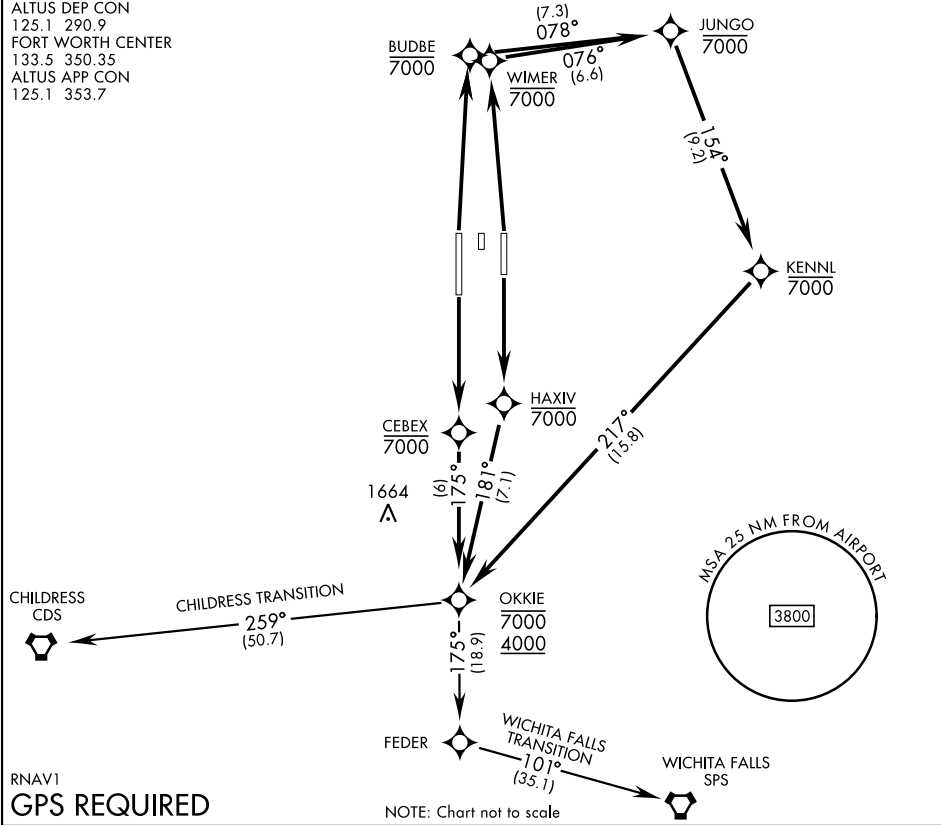


ATIS ★ 109.8 273.5	AL-482 [USAF]	Rwy	Knots	60	120	180	240	300	360
CLNC DEL		36L/R	V/V(fpm)	300	600	900	1200	1500	1800

120.65 284.7  
GND CON  
121.85 275.8  
ALTUS TOWER ★  
119.65 254.4  
ALTUS DEP CON  
125.1 290.9  
FORT WORTH CENTER  
133.5 350.35  
ALTUS APP CON  
125.1 353.7

Minimum Climb to 1900

TOP ALTITUDE:  
9000



RNAV1  
GPS REQUIRED

DEPARTURE ROUTE DESCRIPTION

TAKEOFF RWY 18L: Climb direct HAXIV, then on track 181° to OKKIE. Cross OKKIE between 4000 and 7000, thence...

TAKEOFF RWY 18R: Climb direct CEBEX, then on track 175° to OKKIE. Cross OKKIE between 4000 and 7000, thence...

TAKEOFF RWY 36L: Climb direct BUDBE, then on depicted route to OKKIE. Cross OKKIE between 4000 and 7000, thence...

TAKEOFF RWY 36R: Climb direct WIMER, then on depicted route to OKKIE. Cross OKKIE between 4000 and 7000, thence...

...via transition or assigned route. Maintain 9000. Expect filed altitude 10 minutes after departure.

CHILDRESS TRANSITION (OKKIE3•CDS): From over OKKIE track 259° to CDS.

WICHITA FALLS TRANSITION (OKKIE3•SPS): From over OKKIE track 175° to FEDER, then track 101° to SPS.

SC-1, 10 JUL 2025 to 07 AUG 2025

SC-1, 10 JUL 2025 to 07 AUG 2025