

ALTUS, OKLAHOMA

ILS or RNAV (GPS) Y RWY 18R

LOC I-ALT 111.3	APCH CRS 175°	Rwy ldg TDZE Arpt Elev	13,440 1378 1382
---------------------------	-------------------------	------------------------------	---

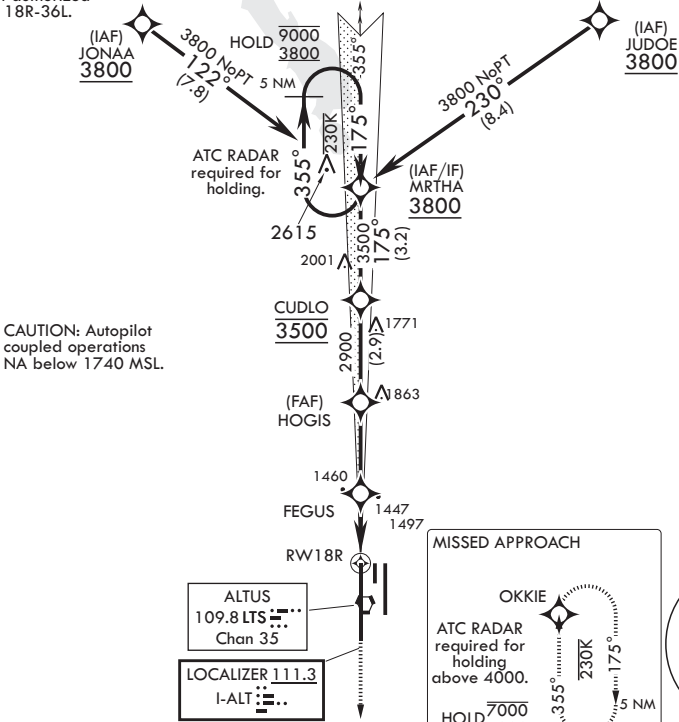
AL-482 (USAF)

ALTUS AFB (KLTS)

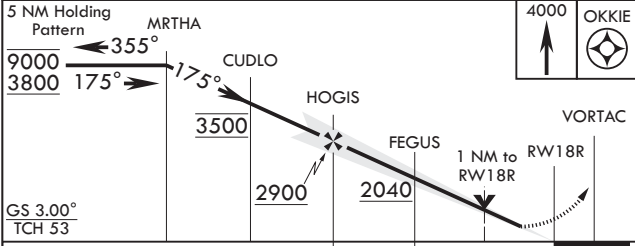
RNP APCH. DME/DME RNP 0.3 NA	SALS	MISSED APPROACH: Climb to 4000 direct OKKIE and hold.
RNAV1 - GPS REQUIRED (for ILS)	A2	
* When ALS inop, increase CAT A8 RVR to 55, vis to 1 mile; CAT CDE RVR to 60, vis to 1 1/8 miles.		

ATIS* 109.8 273.5	FORT WORTH CENTER 133.5 350.35	APP CON 125.1 353.7	TOWER* 119.65 254.4	GND CON 121.85 275.8	CLNC DEL 120.65 284.7
-----------------------------	--	-------------------------------	-------------------------------	--------------------------------	---------------------------------

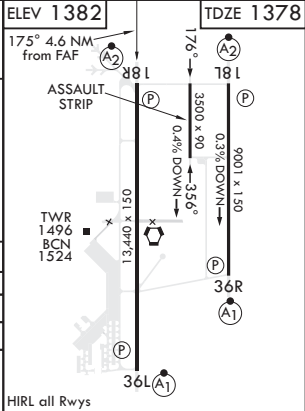
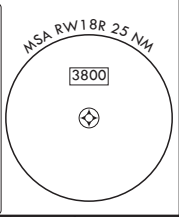
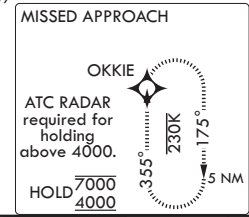
** Circling not authorized
W of Rwy 18R-36L.



EMERG SAFE ALT 100 NM 4900



CATEGORY	A	B	C	D	E
S-ILS 18R	1578/40		200	(200-¾)	
LNAV MDA*	1760/40 382 (400-¾)		1760/45	382	(400-⅞)
CIRCLING**	1780-1 398 (400-1)	1840-1 458 (500-1)	1880-1½ 498 (500-1½)	2080-2¼ 698 (700-2¼)	2180-2¾ 798 (800-2¾)



ALTUS, OKLAHOMA

34°40'N - 99°16'W

ALTUS AFB (KLTS)

Amdt 2 14JUL22

ILS or RNAV (GPS) Y RWY 18R

SC-1, 10 JUL 2025 to 07 AUG 2025

SC-1, 10 JUL 2025 to 07 AUG 2025