
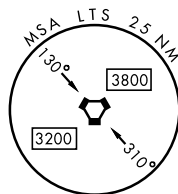
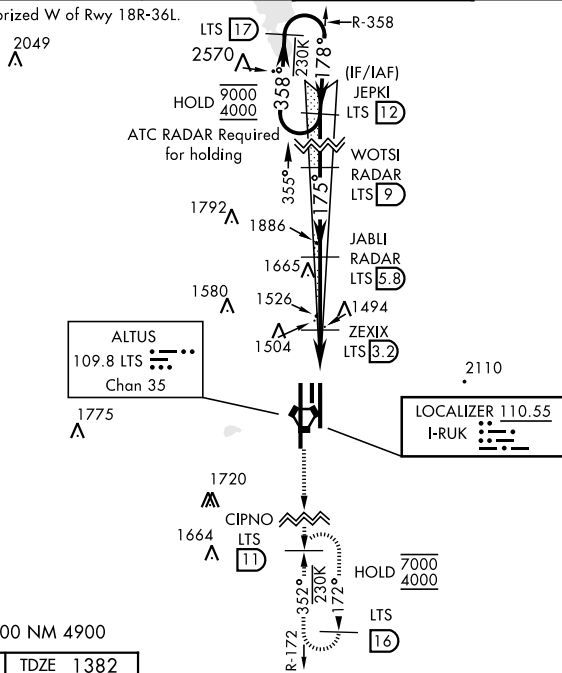


## ILS or LOC RWY 18L

LOC I-RUK <b>110.55</b>		APCH CRS <b>175°</b>		Rwy Idg TDZE Arprt Elev <b>9001</b> <b>1382</b> <b>1382</b>	AL-482 [USAF]		ALTUS AFB (KLTSS)		
DME or RADAR required.					SALSF 	MISSED APPROACH: Climb to 4000, intercept LTS VORTAC R-172 to CIPNO and hold.			
<div>▽ ** When ALS inop, increase RVR to 55 and vis to 1 mile. ** When ALS inop, increase CAT AB RVR to 55, vis to 1 mile, CAT CDE vis to 1/8 miles.</div>									
ATIS ★ <b>109.8 273.5</b>		FORT WORTH CENTER <b>133.5 350.35</b>		APP CON <b>125.1 353.7</b>		TOWER ★ <b>119.65 254.4</b>		GND CON <b>121.85 275.8</b>	CLNC DEL <b>120.65 284.7</b>

\*\*\*Circling not authorized W of Rwy 18R-36L.



EMERG SAFE ALT 100 NM 4900

ELEV 1382      TDZE 1382

175°  
4.6 NM  
from FAF

176°  
178°  
175°  
358°  
178°  
3500  
4000  
9000

ASSAULT STRIP

TWR 1496  
1524

1516

36L      HIRL all Rwy's      36R

FAF to MAP 4.1 NM

Knots	60	90	120	150	180
Min:Sec	4:06	2:44	2:03	1:38	1:22

ALTUS, OKLAHOMA  
Amdt 5 20APR23

34° 40'N-99° 16'W

ALTUS AFB (KLTS)

ILS or LOC RWY 18L

SC-1, 10 JUL 2025 to 07 AUG 2025

SC-1, 10 JUL 2025 to 07 AUG 2025