


VOR ALI <b>114.5</b>	APP CRS <b>325°</b>	Rwy Idg TDZE Apt Elev	<b>5997</b> <b>174</b> <b>178</b>
-------------------------	------------------------	-----------------------------	---

VOR RWY 31  
ALICE INTL (ALI)

**▽** When local altimeter setting not received, use Nueces County altimeter setting; increase all MDA 60 feet and visibility S-31 Cats C and D and Circling Cat D ¼ SM. For inop ALS, increase S-31 Cats C and D visibility to 1½ SM. For inop ALS when using Nueces County altimeter setting, increase S-31 Cats C and D visibility to 1½ SM.

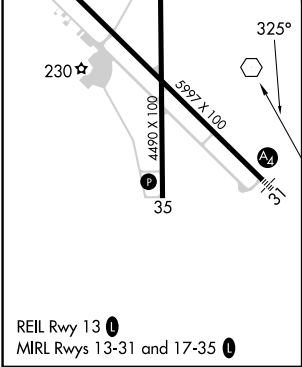
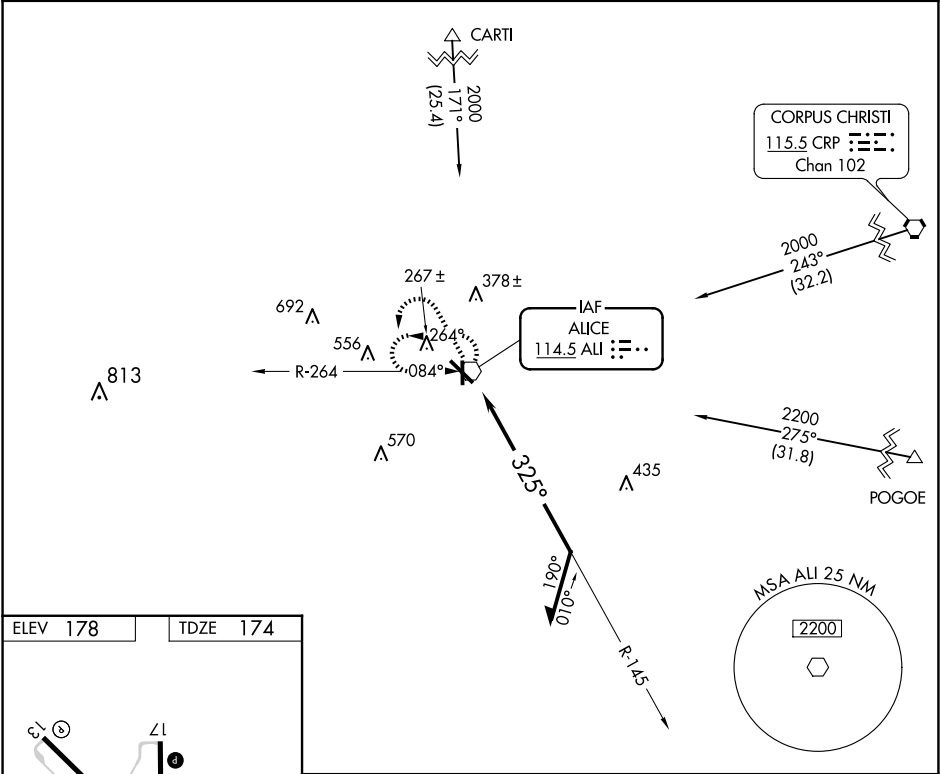
**Δ**

**MALS**



**MISSED APPROACH:** Climb to 1500 then climbing left turn to 2000 direct ALI VOR and hold.

ASOS <b>119.225</b>	KINGSVILLE APP CON ★ <b>119.9 290.45</b>	UNICOM <b>123.0 (CTAF) 0</b>
------------------------	---	---------------------------------



<div><div>1500</div><div>2000</div><div>ALI</div></div>				<div>ALI VOR</div> <div>Remain within 10 NM</div>	
<div><div>145°</div><div>1900</div><div>325°</div></div>					
CATEGORY	A	B	C	D	
S-31	620-¾	446 (500-¾)	620-1	446 (500-1)	
CIRCLING	620-1 442 (500-1)	640-1 462 (500-1)	700-1½ 522 (600-1½)	900-2¼ 722 (800-2¼)	

SC-3, 10 JUL 2025 to 07 AUG 2025

SC-3, 10 JUL 2025 to 07 AUG 2025