

WAAS CH 81813 W31A	APP CRS 309°	Rwy Idg TDZE Apt Elev	5997 174 178
--	------------------------	-----------------------------	---

RNAV (GPS) RWY 31

Alice Intl (ALI)

RNP APCH - GPS.

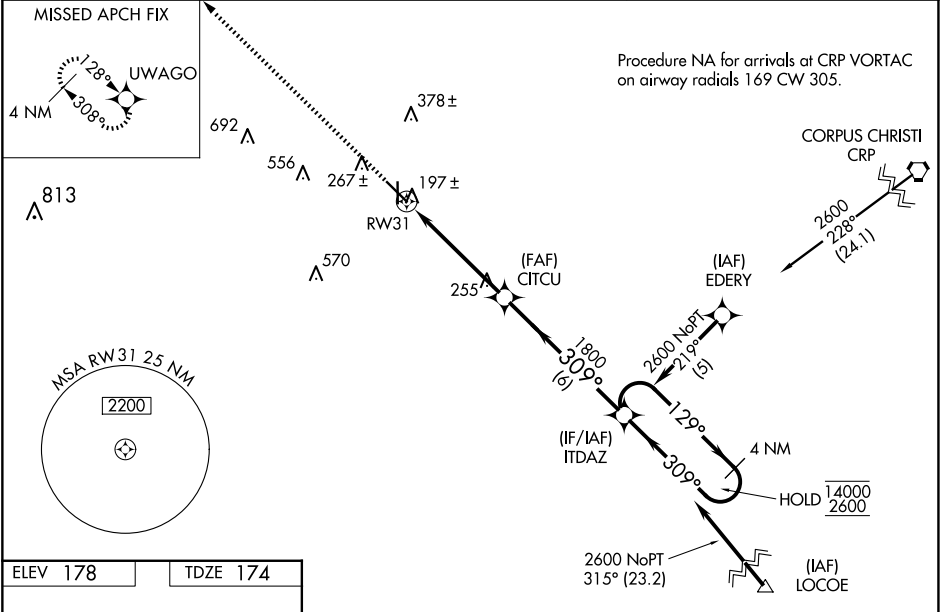
Baro-VNAV and VDP NA when using Nueces County altimeter setting. For uncompensated Baro-VNAV systems, LNAV/VNAV NA below -15°C or above 54°C. When local altimeter setting not received, use Nueces County altimeter setting: increase LPV DA to 494 feet, LNAV/VNAV DA to 524 feet; increase all MDA 60 feet and LNAV Cat C and D, and Circling Cat D visibility ¼ SM. For inop ALS, increase all LPV and LNAV/VNAV visibilities to ¾ SM. For inop ALS with Nueces County altimeter setting, increase all LPV visibilities to ¾ SM and LNAV Cat C and D visibility to 1⅛ SM.

MALS

MISSED APPROACH:

Climb to 2100 direct UWAGO and hold.

ASOS 119.225	KINGSVILLE APP CON ★ 119.9 290.45	UNICOM 123.0 (CTAF) 0
------------------------	---	---------------------------------



REIL Rwy 13

MIRL Rwy 13-31 and 17-35

2100

↑

UWAGO

✦

ITDAZ

4 NM Holding Pattern

129° → 14000

← 309° 2600

GP 3.00° TCH 47

CITCU

1 NM to RW31

309°

1800

1 NM

3.9 NM

6 NM

CATEGORY	A	B	C	D
LPV DA	437-¾	263 (300-¾)		
LNAV/VNAV DA	467-¾	293 (300-¾)		
LNAV MDA	520-¾	346 (400-¾)		
CIRCLING	600-1 422 (500-1)	640-1 462 (500-1)	700-1½ 522 (600-1½)	900-2¼ 722 (800-2¼)