

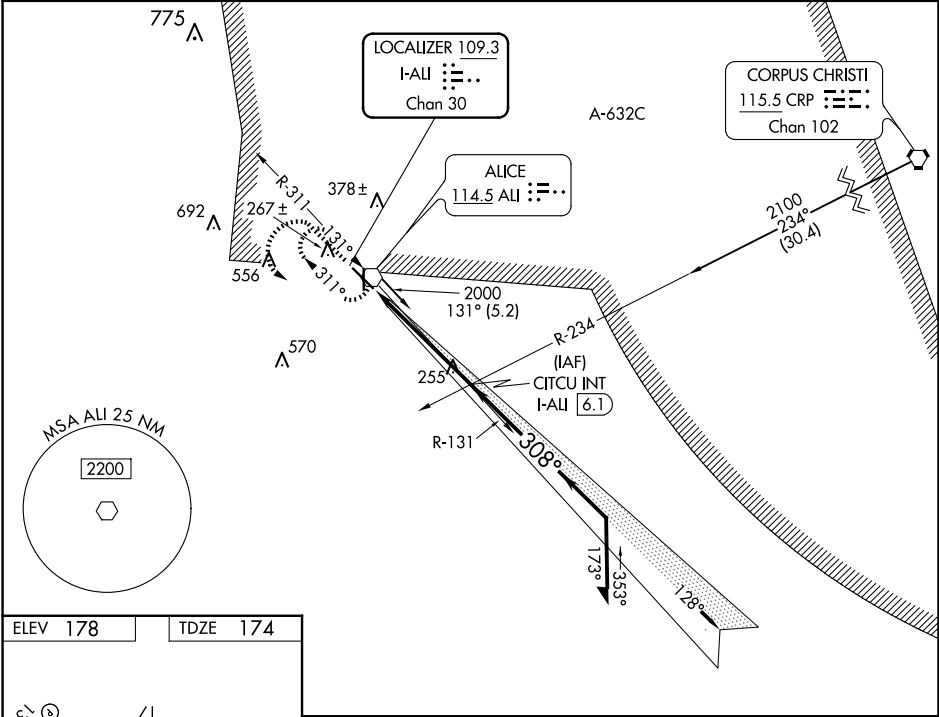
LOC/DME I-ALI	APP CRS	Rwy Idg	5997
109.3	308°	TDZE	174
Chan 30		Apt Elev	178

LOC/DME RWY 31

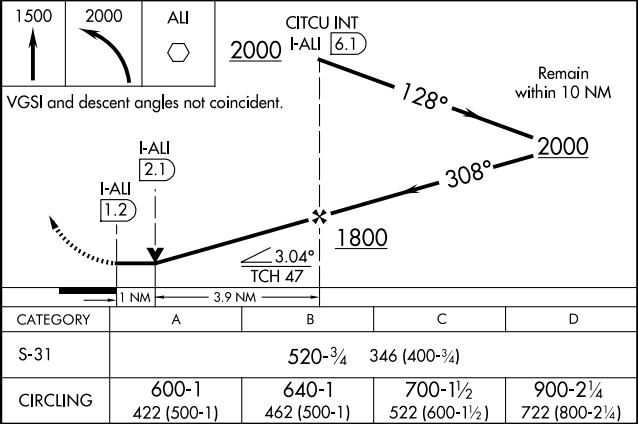
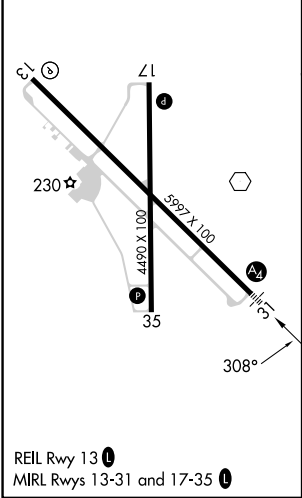
ALICE INTL (ALI)

RADAR required for procedure entry from Corpus Christi CRP VORTAC.		MALS	MISSED APPROACH: Climb to 1500 then climbing left turn to 2000 on direct ALI VOR and hold.
VDP NA when using Nueces County altimeter setting. When local altimeter setting not received, use Nueces County altimeter setting and increase all MDAs 60 feet and S-LOC 31 visibility Cat C/D ¼ SM, and Circling visibility Cat D ¼ SM. For inop ALS when using Nueces County altimeter setting, increase S-31 Cats C, D visibility to 1½ SM.		2	

ASOS	KINGSVILLE APP CON ★	UNICOM
119.225	119.9 290.45	123.0 (CTAF) 0



ELEV 178	TDZE 174
----------	----------



SC-3, 10 JUL 2025 to 07 AUG 2025

SC-3, 10 JUL 2025 to 07 AUG 2025