

APP CRS
210°

Rwy Idg
6689

TDZE
6689

Apt Elev
6689

RNAV (GPS) RWY 21

DURANGO-LA PLATA COUNTY (DRO)

RNP APCH.

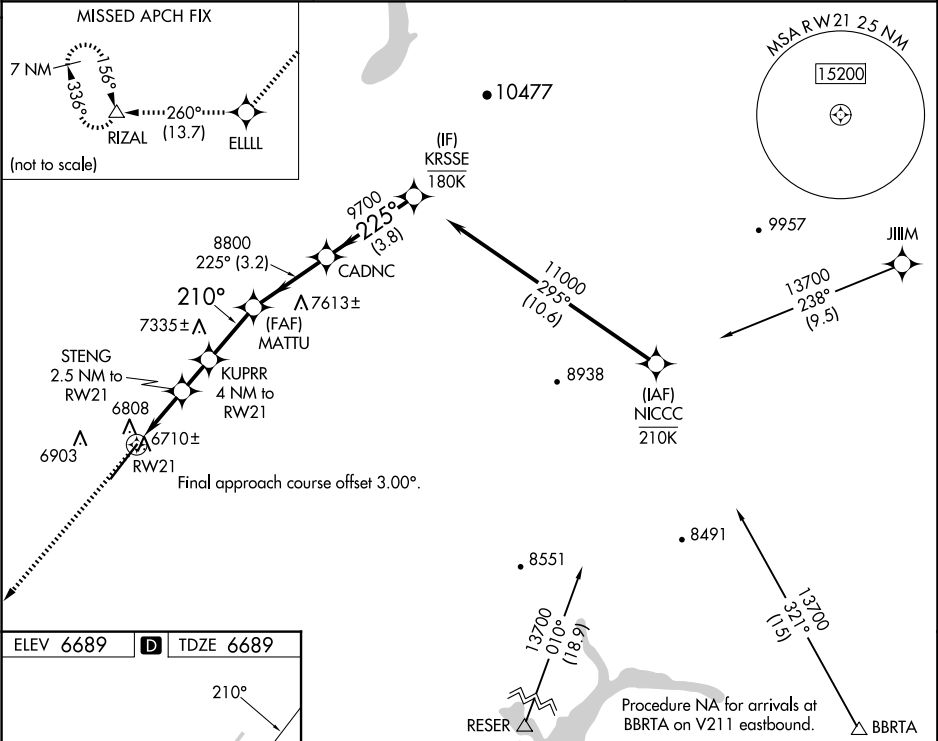
▼

⚠

Rwy 21 helicopter visibility reduction below ¾ SM NA. For uncompensated Baro-VNAV systems, LNAV/VNAV NA below -20°C or above 54°C.

MISSED APPROACH: Climb to 11000 direct ELLLL and on track 260° to RIZAL and hold.

ASOS 120.625	DENVER CENTER 118.575 348.7	UNICOM 122.8 (CTAF) 0
------------------------	---------------------------------------	---------------------------------



ELEV 6689

D

TDZE 6689

210°

0.8% UP

9201 X 150

0.0% DOWN

REIL Rwy 21

HIRL Rwy 3-21

11000

ELLLL

tr 260°

RIZAL

*LNAV only

STENG 2.5 NM to RW21

*1.2 NM to RW21

RW21

7540*

8000*

8800

MATTU

KUPRR 4 NM to RW21

CADNC

KRSSE

11000

GP 3.00°

TCH 51

1.2 NM

1.3 NM

1.5 NM

2.5 NM

3.2 NM

3.8 NM

CATEGORY	A	B	C	D
LNAV/VNAV	DA	7019-1	330 (400-1)	
LNAV MDA	7120-1	431 (500-1)	7120-1¼ 431 (500-1¼)	
CIRCLING	7160-1 471 (500-1)	7220-1 531 (600-1)	7540-2½ 851 (900-2½)	8140-3 1451 (1500-3)