

APP CRS	Rwy Idg	8018
080°	TDZE	4314
	Apt Elev	4314

RNAV (GPS) RWY 8
DEMING MUNI (DMN)

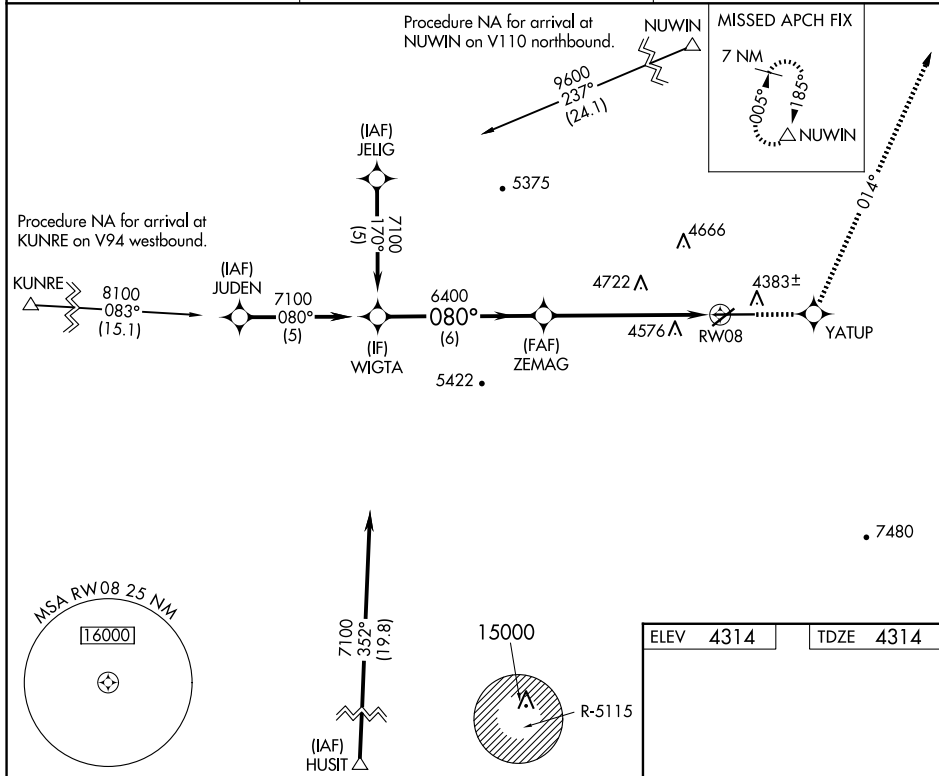
RNP APCH - GPS.

⚠ When local altimeter setting not received, use Las Cruces altimeter setting and increase all MDA 120 feet; increase LNAV Cats C and D visibility $\frac{1}{4}$ mile, Circling Cat B visibility $\frac{1}{4}$ mile and Circling Cats C and D visibility $\frac{1}{2}$ mile. Rwy 8 helicopter visibility reduction below $\frac{3}{4}$ SM NA. Circling Rwy 22, 26 NA at night.

MISSED APPROACH:
Climb to 8000 direct YATUP
and on track 014° to
NUWIN and hold.




ASOS
118.525

ALBUQUERQUE CENTER
128.2 285.5

UNICOM
122.8 (CTAF) **L**

VGSI and RNAV glidepath not coincident
(VGSI Angle 3.00/TCH 43).

8000	YATUP		NUWIN
------	-------	--	-------

		tr 014°	
---	---	------------	---

--	--	--	--

1.8 NM to
RW08
RW08

A diagram of a double-stranded DNA molecule. The top strand is labeled 'NM' with an arrow pointing to a segment of length '1.8 NM'. The bottom strand is labeled 'C' and 'D'.

4920-1 ³ / ₄	4920-2
606 (700-1 ³ / ₄)	606 (700-2)

5020-2	5020-2 $\frac{1}{4}$
706 (800-2)	706 (800-2 $\frac{1}{4}$)

2021 (0.1375) (0.11)

32°16'N-107°43'W

DEMING, NEW MEXICO

Orig-C 08SEP22

32°16'N-107°43'W

DEMING MUNI (DMN)

RNAV (GPS) RWY 8

SW-1, 10 JUL 2025 to 07 AUG 2025