

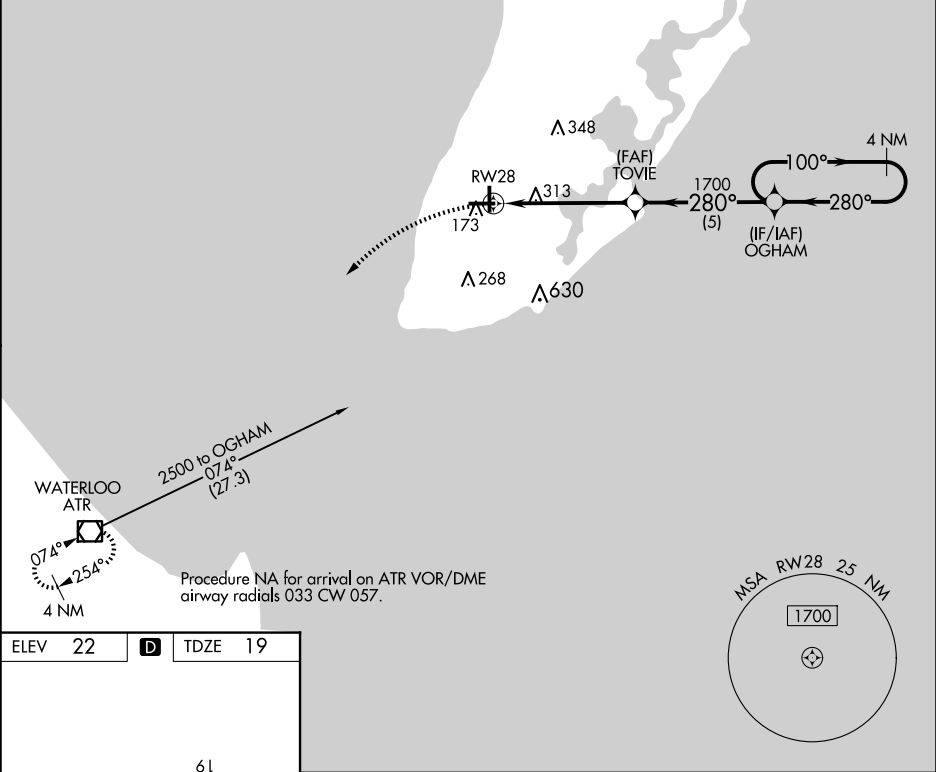
WAAS CH 86741 W28A	APP CRS 280°	Rwy Idg 5000 TDZE 19 Apt Elev 22
--	------------------------	---

RNAV (GPS) RWY 28

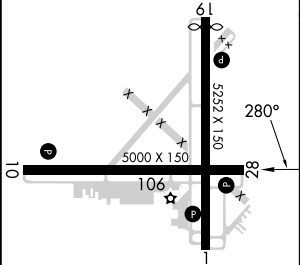
CAPE MAY COUNTY (WWD)

RNP APCH - GPS.	MISSED APPROACH: Climbing left turn to 2500 direct ATR VOR/DME and hold.
▼ For uncompensated Baro-VNAV systems, LNAV/VNAV NA below -15° C or above 54° C. Circling NA for Cats C and D northeast of Rwys 19 and 28. Rwy 28 helicopter visibility reduction below ¼ SM NA. Circling Rwy 1 NA at night.	

AWOS-3PT 118.275	ATLANTIC CITY APP CON 124.6 327.125	CLNC DEL 121.7	UNICOM 122.7 (CTAF) 0
----------------------------	---	--------------------------	---------------------------------



ELEV 22	D	TDZE 19
---------	----------	---------



MIRL Rwy 10-28 0
HIRL Rwy 1-19 0

2500 ATR				
1.6 NM to RW28				
1.6 3.5 NM 5 NM				
CATEGORY	A	B	C	D
LPV DA	665-2½		646 (700-2½)	
LNAV/VNAV DA	634-2½		615 (700-2½)	
LNAV MDA	580-1	561 (600-1)	580-1⅝	561 (600-1⅝)
CIRCLING	580-1	620-1	620-1⅝	980-3
	558 (600-1)	598 (600-1)	598 (600-1⅝)	958 (1000-3)