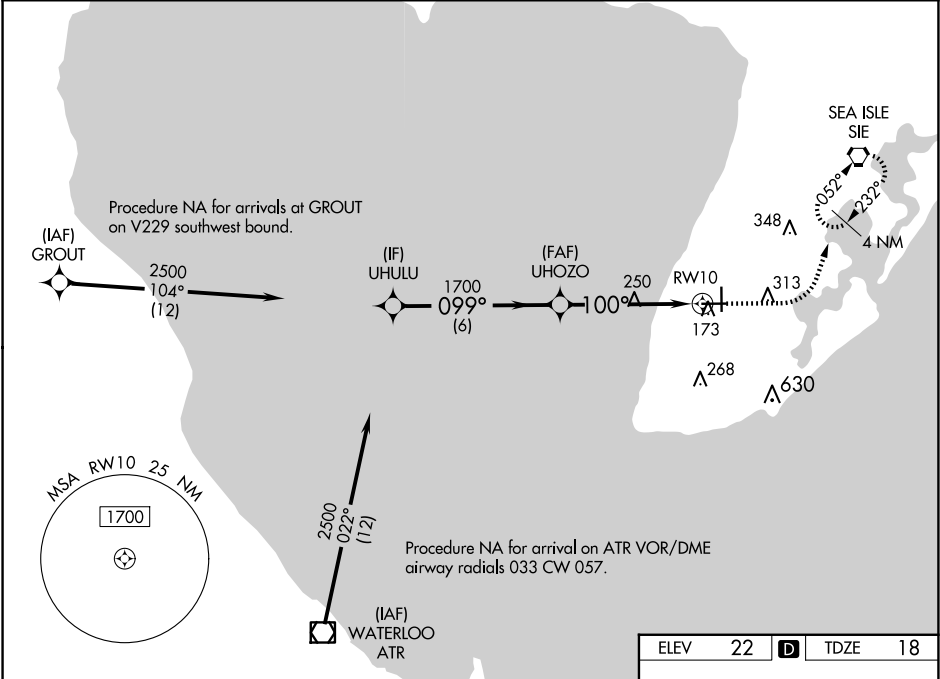


WAAS CH 93541 W10A	APP CRS 100°	Rwy Idg TDZE Apt Elev	5000 18 22
----------------------------------------	------------------------	-----------------------------	---------------------------------------

RNAV (GPS) RWY 10

CAPE MAY COUNTY (WWD)

RNP APCH. ▼ For uncompensated Baro-VNAV systems, LNAV/VNAV NA below -15° C or above 54° C. Circling NA for Cats C and D northeast of Rwy 19 and 28. Rwy 10 helicopter visibility reduction below ¾ SM NA. Circling Rwy 1 NA at night. ▲		MISSED APPROACH: Climb to 500 then climbing left turn to 2000 direct SIE VORTAC and hold.	
AWOS-3PT 118.275	ATLANTIC CITY APP CON 124.6 327.125	CLNC DEL 121.7	UNICOM 122.7 (CTAF) 0



VGSI and RNAV glidepath not coincident (VGSI Angle 3.00/TCH 45).		500	2000	SIE
UHULU		* LNAV only		
2500		* 1.4 NM to RW10		
GP 3.00° TCH 56		RW10		
6 NM		3.7 NM	1.4 NM	
CATEGORY	A	B	C	D
LPV DA	285-7/8		267 (300-7/8)	
LNAV/VNAV DA	336-1		318 (400-1)	
LNAV MDA	500-1		500-13/8	
CIRCLING	500-1	620-1	620-11/2	980-3
	478 (500-1)	598 (600-1)	598 (600-1/2)	958 (1000-3)
ELEV 22 D TDZE 18		HIRL Rwy 1-19 0 MRL Rwy 10-28 0		

NE-2, 10 JUL 2025 to 07 AUG 2025

NE-2, 10 JUL 2025 to 07 AUG 2025