

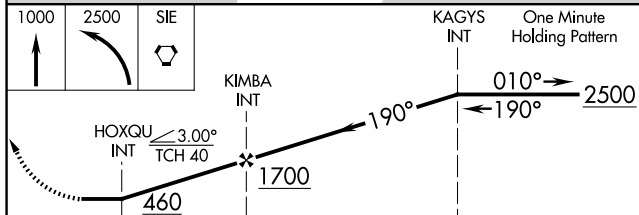
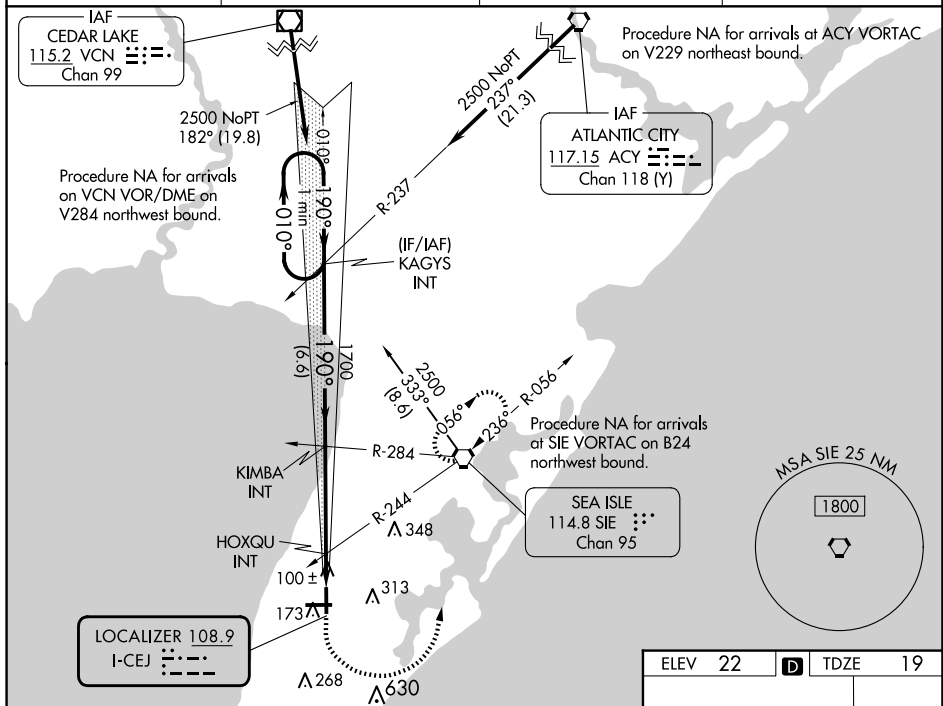
LOC I-CEJ <b><u>108.9</u></b>	APP CRS <b>190°</b>	Rwy Idg <b>5036</b> TDZE <b>19</b> Apt Elev <b>22</b>
----------------------------------	------------------------	---

LOC RWY 19  
CAPE MAY COUNTY (WWD)

**T** Circling NA for Cats C and D NE of Rwy 19 and 28. Rwy 19 helicopter visibility  
**A** NA reduction below 1 SM NA. Circling Rwy 1 NA at night.

**MISSED APPROACH:** Climb to 1000 then climbing left turn to 2500 direct SIE VORTAC and hold.

AWOS-3PT <b>118,275</b>	ATLANTIC CITY APP CON <b>124.6 327,125</b>	CLNC DEL <b>121.7</b>	UNICOM <b>122.7 (CTAF) 0</b>
----------------------------	---	--------------------------	---------------------------------



	1.3	3.9 NM	6.6 NM		
CATEGORY	A	B	C	D	
S-19	460-1	441 (500-1)	460-1 $\frac{3}{8}$	441 (500-1 $\frac{3}{8}$ )	
C CIRCLING	480-1	620-1	620-1 $\frac{1}{2}$	980-3	
	458 (500-1)	598 (600-1)	598 (600-1 $\frac{1}{2}$ )	958 (1000-3)	
HOXQU FIX MINIMUMS (DUAL VOR RECEIVERS REQUIRED)					
S-19	360-1 341 (400-1)				
C CIRCLING	480-1	620-1	620-1 $\frac{1}{2}$	980-3	
	458 (500-1)	598 (600-1)	598 (600-1 $\frac{1}{2}$ )	958 (1000-3)	

