

WAAS CH 40206 W03A	APP CRS 031°	Rwy Idg TDZE Apt Elev	7707 410 410
--	------------------------	-----------------------------	---

RNAV (GPS) Y RWY 3L
TRI-CITIES (PSC)

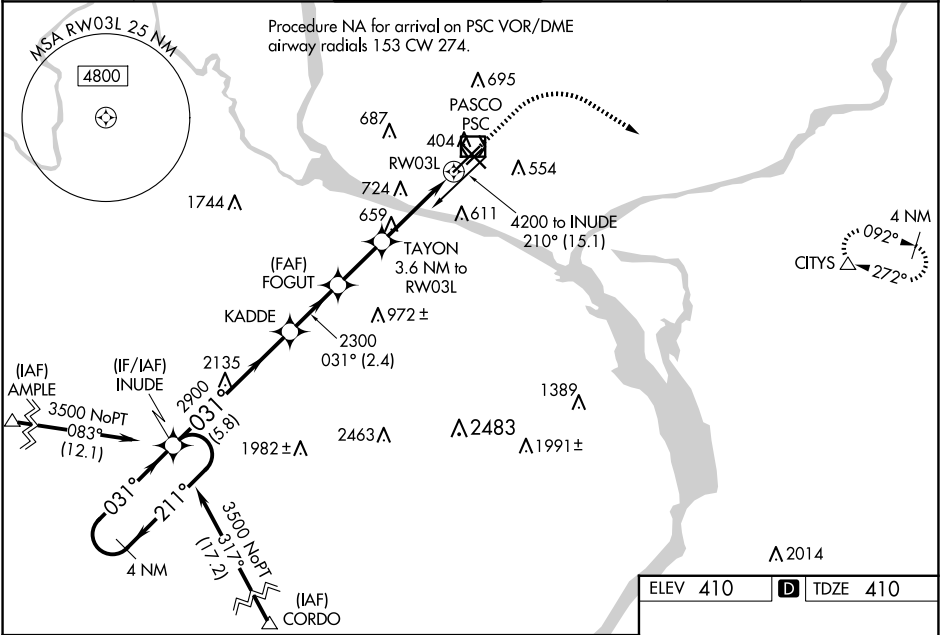
RNP APCH.

Baro-VNAV NA when using Hermiston altimeter setting. For uncompensated Baro-VNAV systems, LNAV/VNAV NA below -14°C or above 54°C. VDP NA with Hermiston altimeter setting.

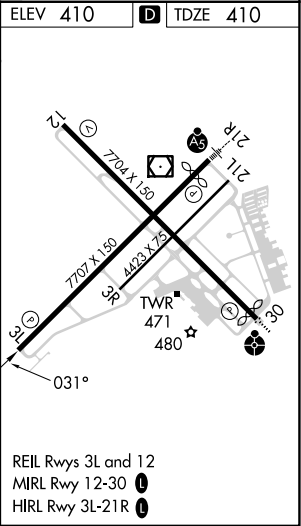
When local altimeter setting not received, use Hermiston altimeter setting: increase all DA 95 feet and all MDA 100 feet. Increase LPV all Cats visibility ¼ mile, LNAV/VNAV all Cats visibilities ⅓ mile: increase LNAV Cats C and D visibility ⅓ mile. Circling Cat C and D visibility ¼ mile.

MISSED APPROACH:
Climb to 1000 then climbing right turn to 3200 direct CITYS and hold.

ATIS 125.65	SPOKANE APP CON* 128.75 377.2	TRI-CITIES TOWER* 135.3 (CTAF) 0 323.3	GND CON 121.8	CLNC DEL 120.0	UNICOM 122.95
-----------------------	---	--	-------------------------	--------------------------	-------------------------



VGSI and RNAV glidepath not coincident (VGSI Angle 3.00/TCH 49).		1000	3200	CITYS
4 NM Holding Pattern		↑	↗	△
3500 ← 211° 031° →		*RNAV only		
GP 3.00° TCH 45		*1.5 NM to RW03L		
KADDE		FOGUT	TAYON	RW03L
2900		2300	3.6 NM to RW03L	
5.8 NM		2.4 NM	2.2 NM	2.1 NM
A		B	C	D
LPV DA		610-¾ 200 (200-¾)		
LNAV/VNAV DA		708-1 298 (300-1)		
LNAV MDA		920-1 510 (600-1) 920-1¾ 510 (600-1¾)		
CIRCLING		920-1 510 (600-1) 940-1 530 (600-1) 1040-1¾ 630 (700-1¾) 1100-2¼ 690 (700-2¼)		



NW-1, 10 JUL 2025 to 07 AUG 2025

NW-1, 10 JUL 2025 to 07 AUG 2025