

WAAS CH 58006 W12A	APP CRS 121°	Rwy Idg 7504 TDZE 402 Apt Elev 410
--	------------------------	---

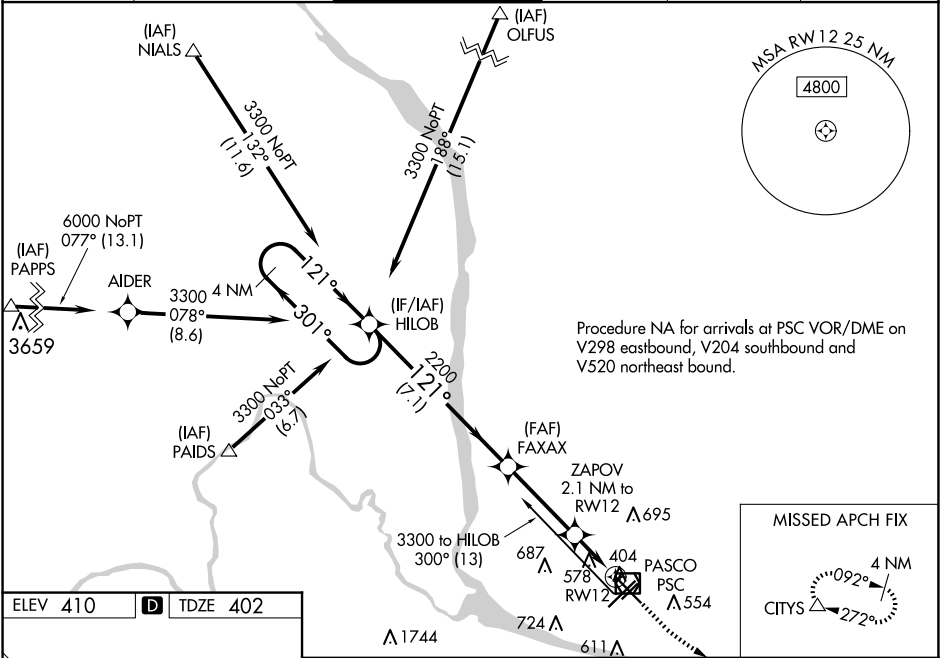
RNAV (GPS) Y RWY 12

TRI-CITIES (PSC)

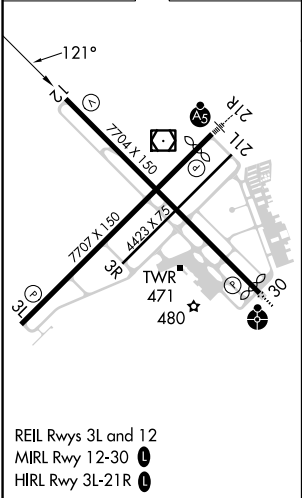
⚠ Baro-VNAV NA when using Hermiston altimeter setting. For uncompensated Baro-VNAV systems, LNAV/VNAV NA below -14°C (7°F) or above 54°C (130°F). DME/DME RNP-0.3 NA. VDP NA with Hermiston altimeter setting. When local altimeter setting not received, use Hermiston altimeter setting: increase all DA 95 feet and all MDA 100 feet. Increase LPV all Cats visibilities ½ mile; LNAV/VNAV all Cats visibilities ⅓ mile; increase LNAV and Circling Cats C and D visibility ¼ mile.

MISSED APPROACH:
Climb to 900 then climbing left turn to 3200 direct CITYS and hold.

ATIS 125.65	SPOKANE APP CON ★ 128.75 377.2	TRI-CITIES TOWER ★ 135.3 (CTAF) 0 323.3	GND CON 121.8	CLNC DEL 120.0	UNICOM 122.95
-----------------------	--	---	-------------------------	--------------------------	-------------------------



ELEV 410	D	TDZE 402
----------	----------	----------



<div>4 NM Holding Pattern</div> <div>3300 ← 301° 121° →</div> <div>GP 3.00° TCH 54</div>				<div>900 3200 CITYS</div> <div>*LNNAV only</div> <div>*1.2 NM to RW12</div> <div>RW12</div>			
7.1 NM				3.4 NM			
0.9 NM				1.2 NM			
CATEGORY	A		B		C		D
LPV DA	602-3/4 200 (200-3/4)						
LNAV/VNAV DA	755-1 1/8 353 (400-1 1/8)						
LNAV MDA	840-1 438 (500-1)		840-1 3/8 438 (500-1 3/8)				
C CIRCLING	880-1 470 (500-1)		940-1 530 (600-1)		1040-1 3/4 630 (700-1 3/4)		1100-2 1/4 690 (700-2 1/4)

NW-1, 10 JUL 2025 to 07 AUG 2025

NW-1, 10 JUL 2025 to 07 AUG 2025