

APP CRS	Rwy Idg	<b>7707</b>
<b>031°</b>	TDZE	<b>410</b>
	Apt Elev	<b>410</b>

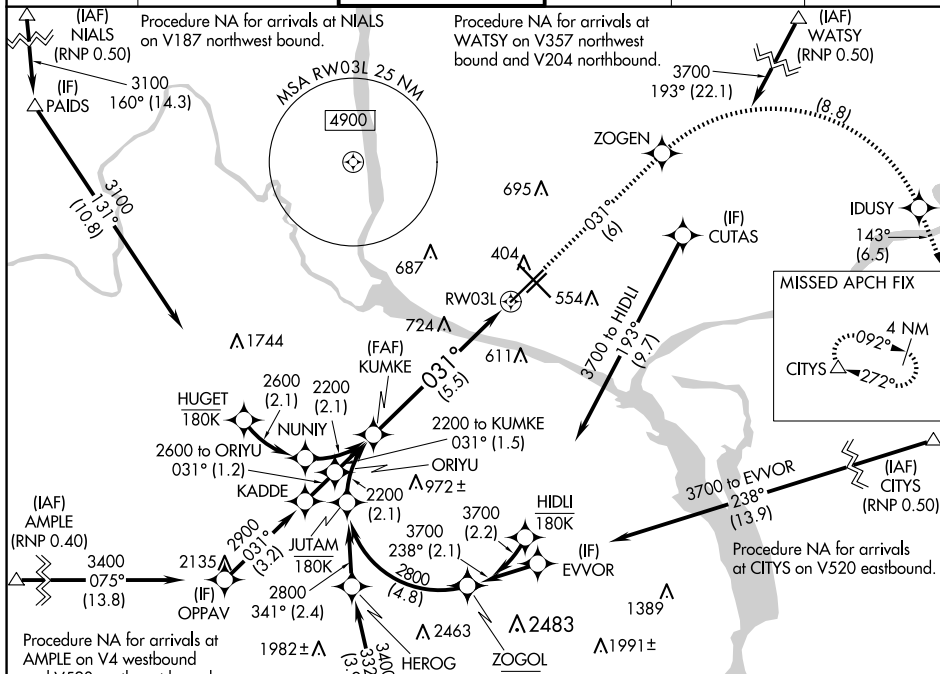
RNAV (RNP) Z RWY 3L  
TRI-CITIES (PSC)

RNP AR APCH. RF required.





**T** For uncompensated Baro-VNAV systems, procedure NA below -14°C or above 54°C.

**MISSED APPROACH:** Climb to 3200 on track 031° to ZOGEN, right turn to IDUSY, and on track 143° to CITYS and hold.

ATIS <b>125.65</b>	SPOKANE APP CON★ <b>128.75 377.2</b>	TRI-CITIES TOWER★ <b>135.3 (CTAF) 0 323.3</b>	GND CON <b>121.8</b>	CLNC DEL <b>120.0</b>	UNICOM <b>122.95</b>
-----------------------	---	--	-------------------------	--------------------------	-------------------------



See planview for multiple IF locations.

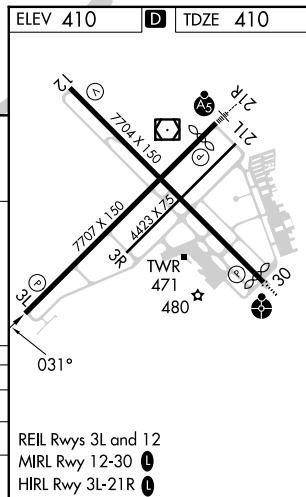
KUMKE   2200 u	3200 ↑ tr 031°	ZOGEN 		IDUSY 	tr 143°	CITYS 
-------------------------	----------------------	--	---	--	------------	--

VGSI and RNAV glidepath not coincident  
(VGSI Angle 3.00/TCH 49).

GP 3.00°  
TCH 45

CATEGORY	A	B	C	D
RNP 0.11 DA		729-1	319 (400-1)	
RNP 0.30 DA		849-1½	439 (500-1½)	

**AUTHORIZATION REQUIRED**



RNAV (RNP) Z RWY 3L