

LOC/DME I-PSC <b>108.7</b> Chan <b>24</b>	APP CRS <b>211°</b>	Rwy Idg <b>7110</b> TDZE <b>403</b> Apt Elev <b>410</b>
---	------------------------	---

ILS or LOC RWY 21R  
TRI-CITIES (PSC)

DME required for LOC only.

DME required for procedure entry at GUSSE, EXODE, CITYS, PSC VOR/DME.

**V** VDP NA when using Hermiston altimeter setting. For inop ALS when using Hermiston altimeter setting, increase S-ILS 21R all Cats visibility to RVR 4500, increase S-LOC 21R Cats C and D visibility to 1 3/4 SM. When local altimeter setting not received, use Hermiston altimeter setting: increase DA to 698 feet and all MDAs 100 feet; increase S-LOC 21R Cat C and D visibility 3/8 SM and Circling Cat C and D visibility 1/2 SM. \* RVR 1800 authorized with use of FD or AP or HUD to DA (NA when using Hermiston altimeter setting).

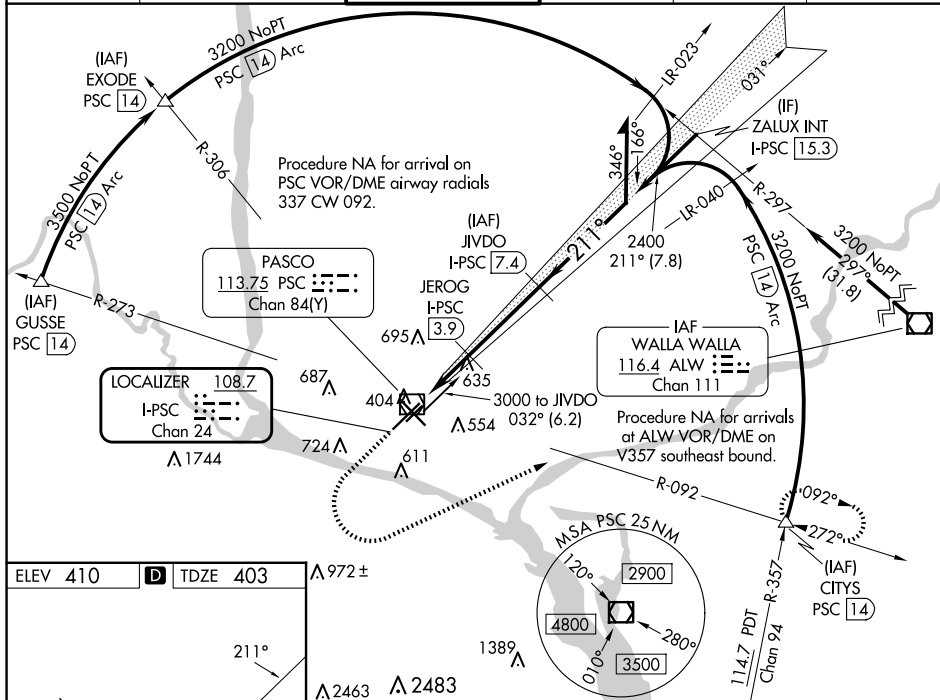
MALSR



**MISSED APPROACH:**

Climb to 1200 then climbing left turn to 3200 on heading 050° and PSC VOR/DME R-092 to CITYS INT/PSC VOR/DME 14 DME and hold.

ATIS 125.65	SPOKANE APP CON ★ 128.75 377.2	TRI-CITIES TOWER★ 135.3 (CTAF) 0 323.3	GND CON 121.8	CLNC DEL 120.0	UNICOM 122.95
----------------	-----------------------------------	---	------------------	-------------------	------------------



CATEGORY	A	B	C	D
S-ILS 21R*	603/24 200 (200-½)			
S-LOC 21R	940/24 537 (600-½)	940/55 537 (600-1)		
<b>C</b> CIRCLING	940-1 530 (600-1)	1040-1¾ 1100-2¼ 630 (700-1¾) 690 (700-2¼)		

REIL Rwy 3L and 12  
MIRL Rwy 12-30  
HIRL Rwy 3L-21R

## ILS or LOC RWY 21R