



VORTAC LMT <b>115.9</b> Chan <b>106</b>	APP CRS <b>134°</b>	Rwy Idg <b>10302</b> TDZE <b>4091</b> Apt Elev <b>4095</b>
---	------------------------	--

VOR/DME or TACAN RWY 14  
CRATER LAKE/KLAMATH RGNL (LMT)

	Circling NA for Cat D and E east of Rwy 14-32. Inop table does not apply to Cats B and C. Helicopter visibility reduction below ¾ SM NA.		MALSF 	MISSED APPROACH: Climb to 5000 then climbing right turn to 9400 via heading 180° and UMT VORTAC R-164 to MUREX/UMT 17 DME and hold, continue climb-in-hold to 9400.	
	ATIS 126.5 263.0	KINGSLEY APP CON ★ 123.675 270.8	KINGSLEY TOWER ★ 133.975 (CTAF) 0 257.8	GND CON 121.9 348.6	UNICOM 122.95

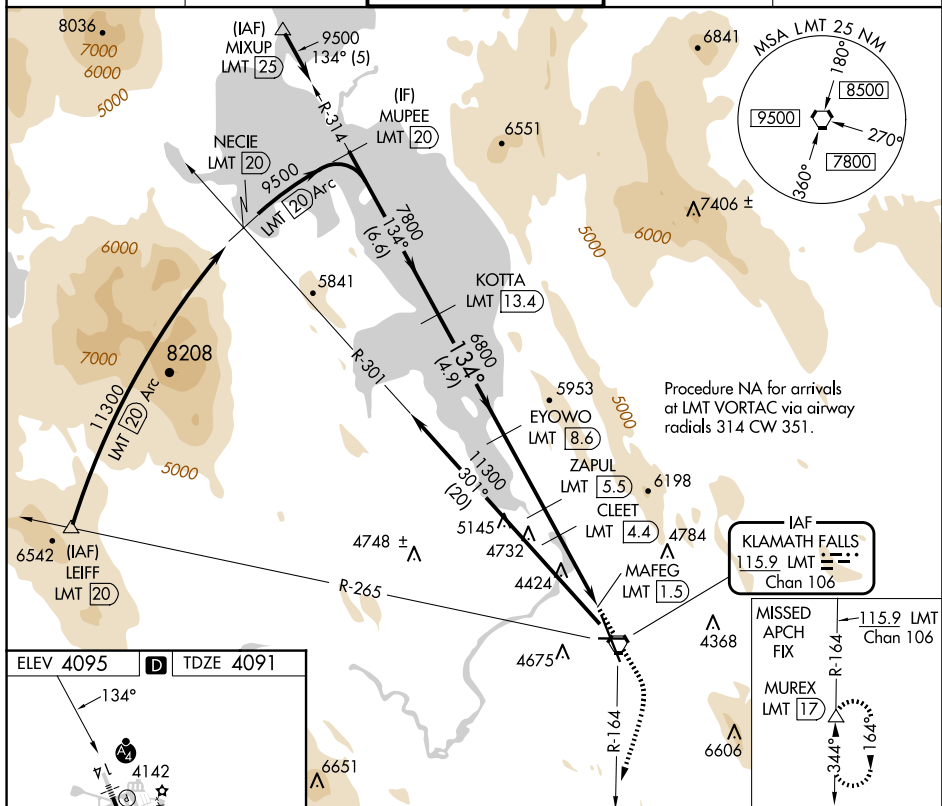


Diagram illustrating the intersection of REIL Rwy 26 and HIRL Rwy 14-32. The diagram shows the runway layout, including the intersection point, runway headings (134° and 26°), and various navigational aids (VOR, TWR, and TWR 4184). The intersection is marked with a 'TWR 4184' tower. The vertical runway has a '5258 X 100' marking. The horizontal runway has a '10202 X 120' marking. The diagram also shows various navigational aids, including a VOR station (V1) and a TWR station (TWR).

<p>MUPEE LMT 20</p> <p>KOTTA LMT 13.4</p> <p>EYOWO LMT 8.6</p> <p>ZAPUL LMT 5.5</p> <p>CLEET LMT 4.4</p> <p>LMT 3.4</p> <p>MAFEG LMT 1.5</p> <p>LMT VORTAC</p> <p>9500</p> <p>7800</p> <p>6800</p> <p>5700</p> <p>5300</p> <p>13.4°</p> <p>3.37°</p> <p>TCH 50</p> <p>Procedure Turn NA</p> <p>6.6 NM</p> <p>4.9 NM</p> <p>3.1 NM</p> <p>1.1 NM</p> <p>1 NM</p> <p>1.9 NM</p> <p>0.4 NM</p> <p>5000</p> <p>9400</p> <p>hdg 180°</p> <p>LMT R-164</p> <p>MUREX</p>								
CATEGORY	A	B	C	D	E			
S-14	4860- <sup>3</sup> / <sub>4</sub> 769 (800- <sup>3</sup> / <sub>4</sub> )	4860-1 <sup>1</sup> / <sub>4</sub> 769 (800-1 <sup>1</sup> / <sub>4</sub> )	4860-2 <sup>1</sup> / <sub>4</sub> 769 (800-2 <sup>1</sup> / <sub>4</sub> )	4860-2 <sup>1</sup> / <sub>2</sub> 769 (800-2 <sup>1</sup> / <sub>2</sub> )	4860-2 <sup>3</sup> / <sub>4</sub> 769 (800-2 <sup>3</sup> / <sub>4</sub> )			
CIRCLING	4880-1 785 (800-1)	4980-1 <sup>1</sup> / <sub>4</sub> 885 (900-1 <sup>1</sup> / <sub>4</sub> )	5420-3 1325 (1400-3)	5660-3 1565 (1600-3)	5700-3 1605 (1700-3)			

VOR/DME or TACAN RWY 14